

The Daisy Chain

Volume 32 Issue 4

December 2022



A simple line drawing of a girl. Her head is a large circle with many pointed petals radiating from the top, resembling a sunflower. She has a small face with closed eyes, a simple nose, and a small mouth. She is wearing a short, flared dress and has two small lines for arms and legs.

terrybukowski@yahoo.com
gkittoco@adelphia.net
 sandilee43@roadrunner.com
 suemunsell@aol.com
 contrary128@gmail.com
 http://www.terreledolls.com

In the box at the upper left called Subscriber Password type **Daisy Chain 2022 (You must capitalize the (D & C) our password is case sensitive)** Click on Login. Then click on the second box on the left in the upper menu, the box which says Current Issue. Scroll down to see the article and double click to enlarge the page. Click on download to print in color. **This will be our password for the year to make it easier for you to remember.**

The Daisy Chain Staff wish everyone Happy Holidays

Glenda Kitto has a web page with clothes and dolls for sale visit terrilee.net

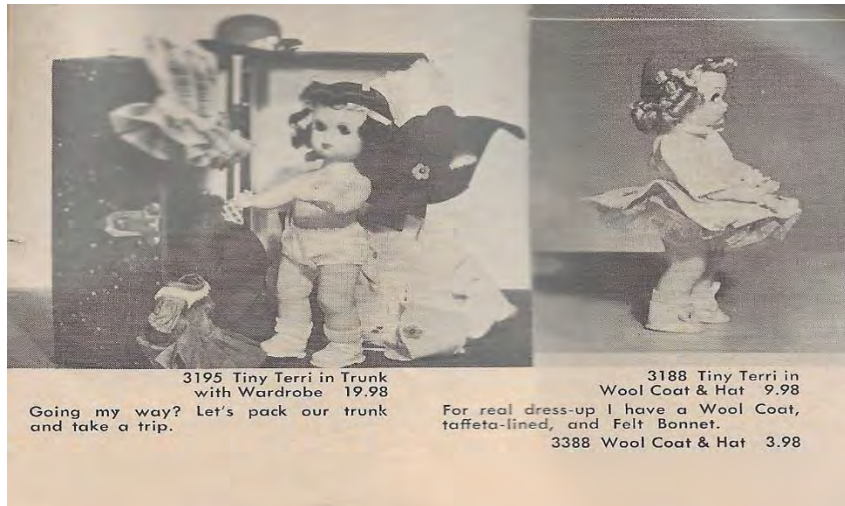
The Daisy Chain magazine and Little Mothers Talk is for personal use only and may not be sold in any form. Furthermore, all pictures and articles published are solely the property of the Daisy Chain and cannot be reproduced or sold without permission. © 2022 The Daisy Chain

**Articles for the March
2023 issue are due
Feb 20, 2023**

©2022 The Daisy Chain

Embroidered Wool Coat & Hat

Terry Bukowski



In 1955 the Tiny Terri Fashion Parade offered an Embroidered Wool Coat & Hat for a cost of \$4.59. The coat construction is the same as the 1955 Duster Coat only made of a light weight wool with pretty embroidered flowers on the skirt. The hat is made of felt with flowers at the end of the cap and in the middle. The coat for Tiny Terri Lee came in

white and a light blue. I have never seen an advertisement for Terri Lee, and was very surprised when Sue Munsell sent me a picture of her Terri wearing the coat.



Jerri's Wardrobe and Giraffe Rack

Terry Bukowski

This year I was able to purchase the original Giraffe Rack for Jerri Lee. I was so excited to add this wonderful item to my collection. Of course, it didn't come with the wardrobe which required a new search for the wonderful clothing that was in the wardrobe #6104. Since my giraffe came alone the item number is advertised as 6102 Giraffe Rack alone and 6 hangers. A 1952 Fashion Parade accompanied my Giraffe Rack.

Prior to this in 1948 – 1952 the item number is 2000 – Jerri Wardrobe so I have to assume that it came with the clothing. In all four Fashion Parades the picture remains the same. The clothing should have the loopy tag or a printed tag.

To ensure I included the correct clothing items a careful study of the 1952 Fashion Parade was need, and that is when I discovered the TYPO. Following is from the Fashion Parade and is the same for 1948 – 1952. “Jerri’s garments hang so nicely on the Giraffe Rack. He has a rain coat and hat, knit sweater and beret, sun suit, swim trunks and beach coat. For regular play Jerri has jeans and a shirt. For night he has pajamas, bunny slippers and robe just like mine.” Of course, Terri Lee is writing this.

Did you find the TYPO? Did Jerri have a sun suit? Or did Terri Lee just get carried away coping from her Winter Wardrobe which was described above Jerri’s Giraffe Rack? I found it interesting that in the Jr advertisement (pages will follow) Jerri Lee’s Wardrobe includes a sunsuit also. Maybe the “sunsuit” is the monogrammed swim trunks? The November 1948 advertisement also included a flannel suit, cap lined with taffeta, and a white batiste shirt.

The first giraffe racks had leather ears and tail which was changed by 1948 and is made out of the same material as the giraffe itself.

I’ll attach pages of the clothing that was included with the Giraffe Rack, and articles of the Giraffe Rack itself written by Pat Rather and Sandy Dorsey.

Jerri's Wardrobe and Giraffe Rack

Terry Bukowski



Jerri's Wardrobe and Giraffe Rack

Terry Bukowski

An *Early* Giraffe Rack

by Pat Rather

"JR"
Magazine
NOVEMBER
1948

"JR" NOV. 1948 Enlarged to show racks.



actual size



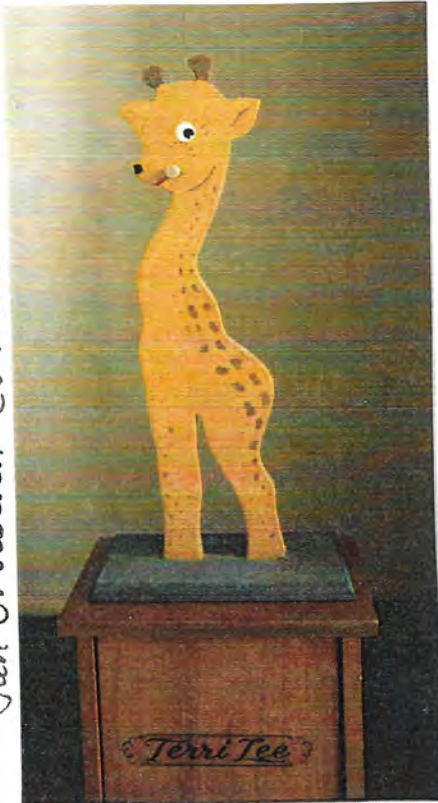
TERRI LEE'S WINTER WARDROBE consists of sweater and beret, jumper skirt and blouse, raincoat and hat, red and white play dress and panties, cotton pajamas, flannel robe and bunny slippers, and winter costume. Beautifully finished wooden clothes rack lacquered light blue with tiny rosebud decals and six wee clothes hangers. Complete—Postpaid, \$24.50.

TERRI LEE'S WARDROBE consists of robe, pajamas, bunny slippers, sunsuit, monogrammed swim trunks and beach coat, raincoat and hat, blue jeans with grippers, a real boy's shirt, a V-neck all wool hand knit sweater and beret, flannel suit, cap lined with taffeta, and white batiste shirt. Giraffe clothes rack with leather ears and tail — lacquered light blue and has six wee hangers. Complete—Postpaid, \$18.95.

The Giraffe Rack

1948-1954 P. Rather
page 2

Jan Growden Collection



The elusive GIRAFFE RACK was a feature in the Lincoln, NE "Fashion Parades" of 1948, '50 & '51. Both Terri's and Jerri's summer wardrobes were sold with these giraffe racks: for Terri #1000, for Jerri #2000, both at \$19.95.

When the company redid the "Fashion Parade" in Apple Valley in 1952, they gave the rack exclusively to Jerri for Terri had a Winter and a Deluxe Wardrobe.

Jan Growden Collection



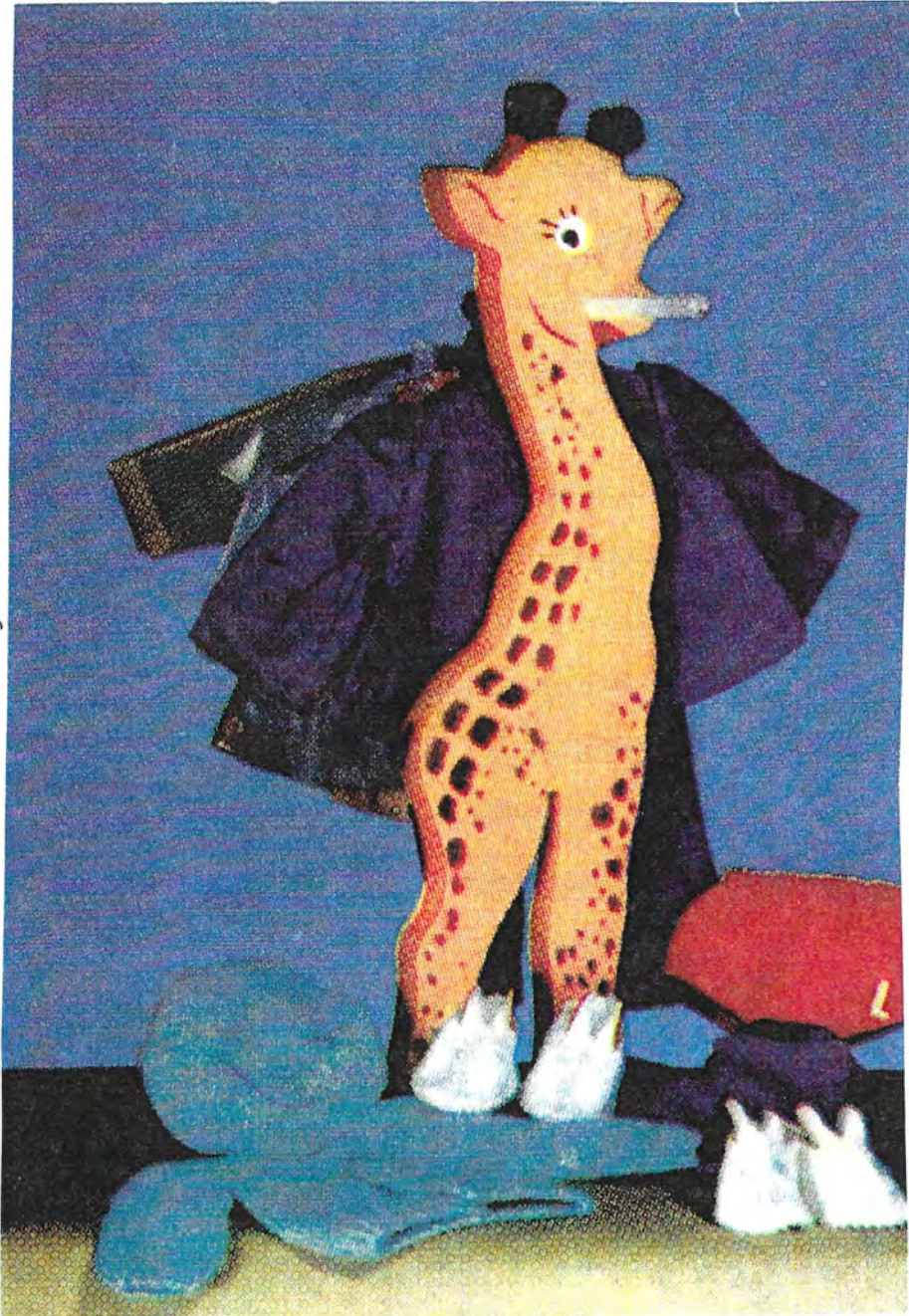
Even though the GIRAFFE RACK was carried in the "Fashion Parade" for so many years, only one had turned up by 1997. It measures 18" tall and stands on a base stained with a green color. The finish on the wood has "coagulated" into a rough, grainy covering and this gives it an unmistakable texture.

GIRAFFE RACKS were made and sold in 1990's by two sparate Terri Lee collectors. Some of them are signed and the number of reproductions was limited. However, if you do find one of these rare item, be sure to ask lots of questions!

The Giraffe Rack 1948 - 1954

by Pat Rather

Lincoln, Nebraska and Apple Valley "Fashion Parades" 1948 & 1952



Jerri's Giraffe Rack

By YoursTerriLee



Recently two beautiful Jerri Giraffe racks were found in Reno, Nevada. The dealer who had them recognized them from the 1952 Apple Valley Fashion Parade. The giraffe appears in full color on the back of that Fashion Parade. Jerri's Wardrobe and Giraffe Rack #6104 was offered for \$19.95. The wardrobe included a rain coat and hat, knit sweater and beret, sun suit, swim trunks and beach coat, jeans and a shirt, pajamas, bunny slippers, and a robe. The Giraffe Rack could also be purchased alone with 6 hangers for \$3.95. There are no markings on the clothes rack that identify it as being a Terri Lee item so it is likely that most of the giraffes ended up at garage sales or doll shows unidentified. Many were disposed of as families moved and little girls outgrew their dolls. This has always been a very rare and sought after item in the Terri Lee collector's world. Several years ago

Glenda Kitto encouraged our Terri collector friend Jan Growden, who has since passed away, to make some reproductions of her original Jerri Giraffe Rack. YoursTerriLee and Glenda each have a wonder copy of Jan's clothes rack made to exactly the original dimensions. My rack is marked on the bottom "Jerri Lee repro #3 Jan Growden '93." There was so much interest in the Giraffe Racks that we did a workshop at a previous Daisy Chain Convention where Rosalee Rainbolt helped us all make Tiny Giraffe Racks for our Tiny Jerri Lee. Collecting Terri Lee is a life-time hobby and exciting finds occur so keep looking and keep an open mind. All of the reproduction giraffes have smooth paint but the original item has a flocked finish. **HAPPY HUNTING!**





6104 Jerri's Wardrobe
and Giraffe Rack

6005 Terri's Winter Wardrobe
in small Chest

OUR MINIATURE WARDROBE

In the Fall Mother prepares my wardrobe for Winter. In the chest are my hand-tailored flannel or velveteen coat, bonnet, white fur muff, mittens, and fur-trimmed galoshes. I also have my party dress, rain coat and hood, pedal pushers and sport shirt, flannel robe, bunny slippers and pajamas. My name is on the door.

Jerri's garments hang so nicely on the Giraffe Rack. He has a rain coat and hat, knit sweater and beret, sun suit, swim trunks and beach coat. For regular play Jerri has jeans and a shirt. For night he has pajamas, bunny slippers and robe just like mine.

6102 Giraffe Rack alone
and 6 hangers

6103 Small Chest alone
and 6 hangers

The Jerri Giraffe Rack appeared in both the 1950 Lincoln Nebraska Fashion Parade and the 1952 Apple Valley Fashion Parade.

The giraffe wardrobe with 10 clothing items sold for \$19.95

The giraffe rack alone with 6 hangers sold for \$3.95. The price remained the same from 1950 to 1952. The item is no longer listed in 1954.



REPRODUCTION REAL

THE SPOTS ARE MUCH LARGER ON THE REPRODUCTION. NOTICE THE REPRODUCTION LOOKS LIKE THE PICTURE IN THE FASHION PARADE SO THERE COULD BE MORE THAN ONE VERSION.

There are no markings to identify the maker of the Jerri Giraffe rack. Since it appears in the Lincoln Fashion Parade it may have been made in Lincoln or Omaha, Nebraska. The words Terri Lee or Jerri Lee do not appear on the item to identify it.



JERRI'S GIRAFFE
RACK IS A FLOCKED
WOODEN GIRAFFE.

THE GREEN BASE IS
ALSO FLOCKED.

HEIGHT: 17 1/4 IN

DOWEL: 4 1/2 IN. ON
EACH SIDE

BASE: 8 1/4 X 6 IN

THIS ONE IS
MISSING A ROPE
TAIL.

REPRODUCTION
GIRAFFES WERE MADE
IN LOS ANGELES IN
THE 1990'S THEY HAVE
SHORTER DOWELS
FOR HANGING
CLOTHING AND ARE
NOT FLOCKED



copy

original

JERRI'S GIRAFFE RACK



1948 – 1952 Jerri's Giraffe Rack Blue Jeans, Shirt & Sweater #2070

Terry Bukowski



Dressed for play Jerri is wearing “blue” jeans with grippers, a real boy’s shirt, and has a V-neck all wool hand knit sweater and beret. The reason I quoted blue in the jeans is that while the pants are blue, they are made of gabardine cotton and not what we would call blue jeans which is made of a must heavier fabric as seen in the western wear. There are

pockets on each side

The cotton shirt is tucked into the pants with three buttons down the front.

To complete the outfit is a V-neck all wool hand knit sweater and beret. The picture in the 1952 Fashion Parade shows a blue sweater set, mine is in red. By Jerri holding the sweater you can see the V neck.



1948 – 1952 Jerri's Giraffe Rack Robe, Pajamas, Bunny Slippers

Terry Bukowski

Jerri's robe with the bunny applique trim is pictured in the Fashion Parade from 1948 – 1951, in 1952 the picture is replaced and Jerri's robe has a lamb on it. However, on page 29 the 1952 Fashion Parade says "It's past our bedtime, and I am so sleepy I can hardly keep my eyes open long enough to put on my pretty pajamas and flannel bathrobe with a tiny lamb or



bunny applique trim. The ears on my bunny slippers peak out from under my pajamas."

The bunny applique was sold well into 1952. The pajama top snaps down the front, the tie on the belt is attached at the back of the robe.

The pajamas and robe are always color coordinated.

Bunny Slippers

Terry Bukowski



Advertised between 1948 and 1952 the bunny slippers were sold to accompany both Terri and Jerri Lee pajamas and nities. The style of slippers changes in the 1954 Fashion Parade. Bunny slippers could be purchased separately for \$.85 or in sets.

What is interesting is the variations of faces painted on the bunnies or the lack of. While I believe there was a sample for those constructing the bunnies to follow the faces were left up to those finishing the slippers.



TWO PIECE PAJAMAS of seersucker, gay colored nursery rhyme print; **FLANNEL ROBE**, red or white, with a fuzzy-tailed bunny of white felt sewn on it; **BUNNY SLIPPERS** of white felt, with faces and pink ears. **Complete, \$4.50, postpaid.**

The June 1948 issue of Jr. Magazine advertises Bunny Slippers of white felt, with faces and pink ears, I found no reference to when the red ears might have been made. Dennis Ross has a pair of pink felt bunny slippers in his collection. The variations are out there you just need to look as not all

bunnies are the same.



1948 – 1952 Jerri's Giraffe Rack

Swim Trunks #2037 & Beach Coat #2038

Terry Bukowski



The Giraffe Rack Wardrobe shows Jerri's swim trunks in red and the beach coat in blue and can be seen on page 23 of the 1948 Fashion Parade. They were sold separately.

The swim trunks are made of a wool jersey fabric with a J monogrammed on the suit. The cost in 1948 was \$1.00

The beach coat is made of cotton weave and has JL monogrammed and placed at the top of the jacket. Cost in 1948 was \$150.

The monogram on both the trunks and jacket are made of

felt that has been glued on.

1948 – 1952 Jerri's Giraffe Rack Raincoat & Hat #3550B

Terry Bukowski



Made of light weight plastic the raincoat over the years has become very fragile.

Jerri's coat and hat has remained the same throughout the years.

The sleeves are part of the coat making the coat one piece. Top stitching is around the sleeves, down the front, hem and collar.

The cap is made up of four triangles sewn together to form a cap with a brim attached. The brim has four rows of top stitching.

To finish the coat is a removable belt, top stitched on both sides with a gripper snap.

The coat is made large enough so Jerri can wear it over his clothing.



Jr Magazine 1948 Jerri's Giraffe Rack Short Pants & Shirt #2069

Terry Bukowski

Mentioned in the Jr Magazine of November 1948 but removed in the 1948 - 1952 Fashion Parade from the Giraffe Rack Wardrobe is the flannel suit, which can be seen on page 7 of the 1948 - 1951 Fashion Parades, however the flannel suit was sold without the cap. Called Short Pants and shirt it is item # 2069. The pants and cap were made from flannel or velveteen, with a white shirt. The cap is lined with taffeta. My outfit also came with a jacket.

In 1952 the short pants were lengthened to just above the knee.



You can see the loopy tag in the cap and the taffeta lining. The cap is constructed the same way as the raincoat cap. The brim has two rows of stitching.

Painted Plastic Dolls

Terry Bukowski

In 1948 a new hard plastic (Tenite II), was used in the molds for our dolls. They were still painted and marked: Terri Lee patent Pending, and came to be called Painted Plastic.

We know on Nov 30th 1948 a Patent was taken out for Terri the number was 528824.

The new molds no longer have the hole in the hand for a flower. Flowers from now on would wrap around the wrist with a wire.

These dolls were an improvement over the composition's dolls, as some would eventually craze. The faces varied and were dependent on the face painter. Pat Rather and Sandy Dorsey did an extensive study on the faces, from the eyebrows, eyes, eye lashes and the mouth. Pat also located actual factory employees who painted the faces and an article on one of them is included.

These dolls have been found with two different wigs, the mannequin wig and the raysheen wigs.

Clothing for these dolls should be tagged with the loopy tag and can be found in the 1948 – 1951 Fashion Parades.

FACES: Early Painted Plastic

By Pat Rather

Collection of PAT RATHER



Would you agree that the same person painted all five of these faces?

The side-glancing eyes have 1) spidery lashes arranged symmetrically, four on top and three on the bottom, 2) brown paint, 3) red tear duct dot (a rather rare detail). **NONE** of these dolls are ethyl cellulose. All but the Jerri have mannequin wigs.

BELOW MIDDLE & BELOW RIGHT: Notice the very unusual dot-in-the-eye detail.



Pat Rather Collection



Pat Rather Collection



Don Crowden Collection



Painted Plastics with Two-Toned Eye- Lashes on their **FACES**

LEFT and RIGHT ABOVE: Faces painted by same artist. Eyebrows and lower eyelashes are brown. Upper lashes are black. *Note on dolls' right eyes that there is a characteristic straight stroke from corner to three-stroke eyelash.*

RIGHT BELOW: Different artist and different combination. Jerri has brown brows and black upper & lower lashes.



Esther Farleigh's Terri Lee FACES

An Interview Via "Post-It's" by Pat Rather

A few weeks ago, I sent a packet of Terri Lee face photos, both Painted Plastic and Patent Pending, to Mrs. Esther Farleigh of Lincoln, Nebraska. Did she recognize any of them as "her" faces, ones she had painted before the 1951 fire? I asked her to respond "Yes" or "No" on a Post-It placed on the back of each photo. Here are the results; you can see for yourself.

Collection of PAT RATHER



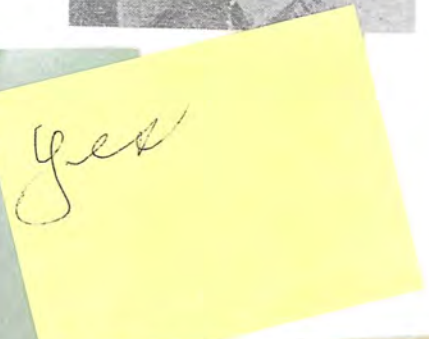
Mrs. Esther Farleigh
February 12, 2002
Lincoln JOURNAL-STAR



1950 at the TL Factory



Collection of JEANNE FOSTER



Bold, Black Eyebrows on Painted Plastic Faces

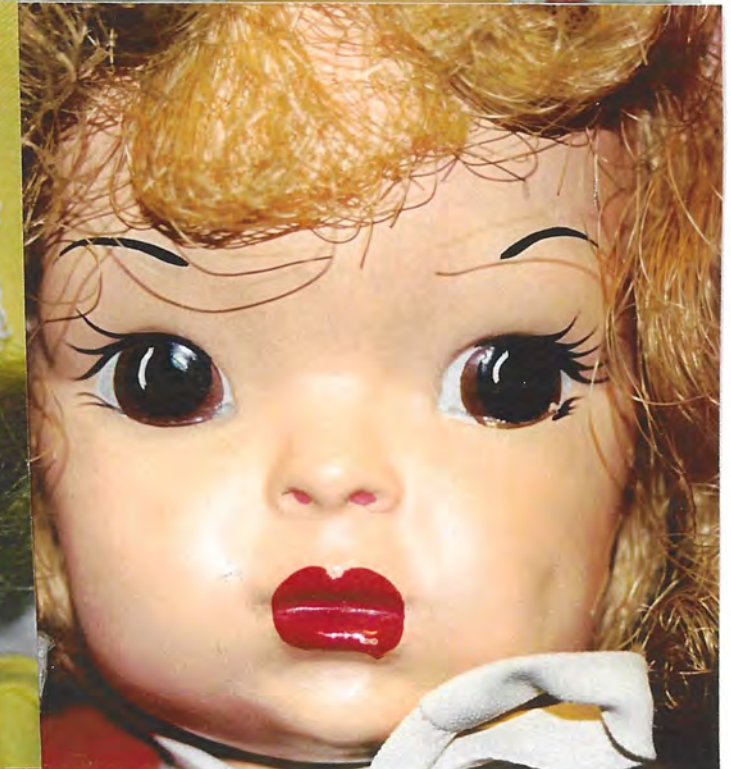
by Pat Rather

Bold, black eyebrows on Painted Terri Lee doll faces are a familiar sight to collectors of the painted dolls. We have seen many, many examples of this particular face with its squared-off mouth.

The Terri Lee in the **Bottom Left** photo was ordered directly *JR Magazine* and is still MIB and in its own shipping carton with the *JR* return address, dating it, therefore to 1948 or early '49.

Mrs. Farleigh thought this might be one of her faces, but she was not completely certain about it.

yes I
think



S-Curve Eyebrows on Painted Plastic Faces

by PAT RATHER

The S-Curve eyebrow! This S-curve characteristic occurs on a few painted plastic dolls with heavy mannequin wigs, on many with the lighter mannequin wigs, and is particularly common on Patent Pending & soft, stuffed vinyl dolls. In my interview through Post-Its, I asked Mrs. Farleigh if this were "the twitch" she mentioned in her Lincoln Journal-Star interview.

Is this the
"twitch"?
who painted it?

her name
was Carol
Hayzen
passed away
10 years ago

Dolls from the Collections of
TERRY BUKOWSKI, PAT RATHER,
JEANNE FOSTER and (formerly) SHARON GRIFFITHS



A CLOSER LOOK AT TWO PAINTED PLASTICS

BY SANDY DORSEY
(YOURS TERRI LEE)

The doll world is changing and more dolls are available for purchase. Not only more dolls but rarer dolls are surfacing. At the last Daisy Chain convention we saw a multitude of wonderful painted plastic Terri Lee dolls. It seems to this writer that more painted plastic Terri Lees which used to be very rare are also being seen on ebay. The purpose of this article is point out the original features of painted plastic dolls so that collectors can make good choices when they purchase these 65 year old dolls. The dolls in this article are not early painted plastics. They would date to approximately 1948 to 1949. How did I date



them? They do not have side glancing eyes as the earlier dolls do and Jerri Lee does not have a mannequin wig. Terri's side braids are also a hint.



The clothing on these two dolls is appropriate for the painted plastic era and they have loopy tags. Let's take a closer look at the clothing. Jerri's shirt is not of the thin silky material that was used later. It is made of heavier cotton blend.



The sewing and



construction is incredibly detailed and the tag is in the center of the neck at the back. The shirt is roomier than later shirts. The yellow wool pants are very short. They are not tagged.



.The Crisscrossed straps are double thick and sewn down each side. Baby round snaps are used for closure.



Now let's take a look at Terri Lee's

clothing. Her dress is made of yellow taffeta and trimmed with Val lace and ribbon. It has puffed sleeves trimmed with lace. The ribbon is single sided rayon satin ribbon.



The dress has a very large hem. This dress is unusual because the hem is hand sewn rather than machine sewn. I have not seen hand sewn hems except in very early clothing.

The loopy tag is sewn into the neck

and the dress has never been washed as the tag is in mint condition. It closes with baby round snaps.





The waist has some pleats and some gathers. The pleats are not as distinct as in newer dresses. It may have been a different pleating machine.

All Painted Plastic Terri Lee dolls should have "Terri Lee Pat. Pending." marked on the back of the torso. This is on the mold that was used when the plant was in Lincoln Nebraska.



There is also a rough triangular spot on the top of the left arm which can be seen in this photograph. It looks as if it were sanded down but not quite enough.

Both of these dolls, which came from a collection in Lincoln, have their original BLACK stringing. I was skeptical about the black rubber bands at first but after seeing many of these I do believe they were original. The first time I saw these I said "Not original." I have changed my mind.





This is a comparison of the early Terri Lee shoes to the later style. On the left are the shoes seen on these Painted Plastic Terri Lee dolls. They are white with 3 scallops but the front of the shoe does not come up as high on the foot as the later shoes shown on the right. It gives the appearance that the doll's foot is wider which it may be. I didn't measure the foot. Composition dolls seem to have a wider foot than plastic dolls and I think these shoes were made for the composition dolls. The socks are regular rayon socks of very good quality. Actually better quality than those shown on the right hand side with the newer shoes.

As I said at the beginning of this article, both of these dolls are from the later part of the Painted Plastic era. The face painting clearing indicates this. Notice how dark the eyebrows are. The eyes are front facing. Typically the right eye has 3 upper lashes and the left eye has five upper lashes. Lips are painted bright red on both dolls. The skin has a wonderful glow.



Terri's Winter Wardrobe

All dollies had to have someplace to store their clothing other than a "shoe box" and Terri Lee was one of the first to present a full line of storage wardrobes. The **Winter Wardrobe, 1948-1952**, was the smaller version of the double door "Treasure Chest" offered in the same years.

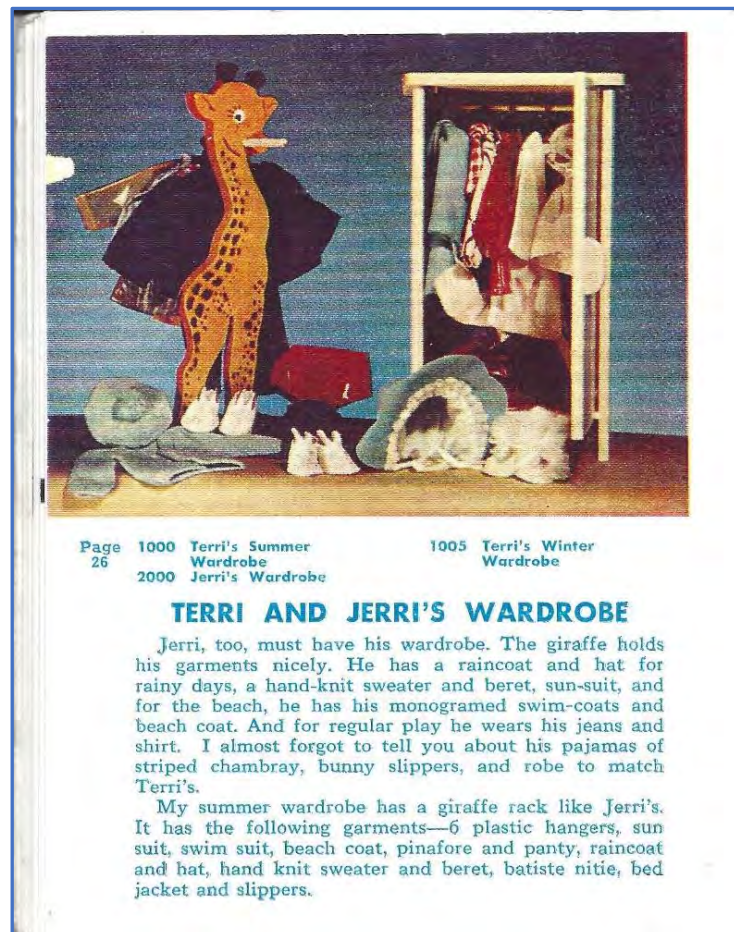


This single door wardrobe can be found in the creamy white paint, a very seldom found pink and natural wood.

A water decal with the Terri *Lee* name defines this as a true Terri Lee authorized wardrobe.



18" tall x 9" wide x 7" deep



Our catalogs tell us that a fully stocked wardrobe would contain:

- A hand tailored flannel or velveteen coat with bonnet
- White fur muff, mittens and galoshes
- You may have a taffeta party dress
- A rain coat with hat
- Pedal pushers and sports shirt
- Flannel robe with fuzzy bunny trim
- Bunny bedroom slippers
- Pajamas of rayon or a cotton print

Winter Wardrobe Contains:

- *A hand tailored flannel or velveteen coat with bonnet, muff, mittens and galoshes*

Each wardrobe would be filled with a selection of items. Most likely every wardrobe was filled with a different selection...Not all would contain "a blue flannel coat set." It may have been yellow or green or velveteen in any color.

I must note that with every mint-in-box doll I've seen the felt galoshes are always worn over a pair of oil cloth shoes. Terri Lee was always thinking about entering a home with dirty shoes and in this way she could take off her galoshes and still have a party worthy pair of shoes on her feet.



Winter Wardrobe Contains:

- *a taffeta party dress*



Taffeta Party dresses like all of the Terri Lee clothing changed styles, colors and prints. All in the winter wardrobe would contain a garment with a printed tag...not necessarily a loopy tag.



Winter Wardrobe Contains:

- *A rain coat with hat*



Page
12

50 Terri in Rain Coat 250 Jerri in Rain Coat

APRIL SHOWERS

It looks like rain today, so Jerri and I have decided to wear our rain coats. We never get wet when we wear these, and we can wade around in the water as much as we want. Underneath my rain coat, I wear one of my regular little dresses. I rather prefer a dotted swiss under mine. Jerri wears his regular suit under his rain coat.

50 Terri
250 Jerri

1050 Rain Coat and Hat only, Terri
2050 Rain Coat and Hat only, Jerri

The bonnet style hat matches the catalog picture and can be found in prints, polka-dots or a solid plastic.

Winter Wardrobe Contains:

- *Pedal pushers and sports shirt*

The pedal pushers we know would have the large stitching on the pockets. These could be either rayon or cotton.



Winter Wardrobe Contains:

- *Flannel robe with fuzzy bunny trim, Bunny bedroom slippers*
- *Pajamas of rayon or a cotton print*



In the catalog photo above both Terri and brother Jerri wear robes with the fuzzy bunny.



5 complete outfits came with a Winter Wardrobe Armoire #6005 Priced at - \$24.95 or empty \$8.95

Don't confuse this with the first Lincoln era Winter Wardrobe Gift Packed Clothes Rack #1005. Names are the same but clothing assortments were different also *Clothes Rack* not an *Armoire Wardrobe*. We have often found that the naming convention used by the Terri Lee Doll Company can be confusing. The differences only come into focus with lots of study.

Lynn Artel is selling her complete collection of 13 vintage Terri Lee's plus a full wardrobe of clothing. Not shown are additional vintage clothing in an additional trunk.

Contact Lynn Artel lynndea1@aol.com

FOR SALE



Please contact me, there is so much more to the collection. lynndea1@aol.com



TL Queen of Dolls Convention 2023

Terri on the Prairie

Kansas City, Missouri

Friday and Saturday, September 8 & 9, 2023

Hotel

Convention hotel:
Embassy Suites Hotel
Kansas City International Airport
7640 NW Tiffany Springs Parkway
Kansas City, MO 64153

To reserve a room:
1-888-240-8273

Our convention code is: TLQ
Rooms are \$129. Wednesday thru
Sunday September 6 thru 10
There is a free airport shuttle and \$10
charge to park your car in their lot.

Fee Change

Convention fees are being charged a little differently for the 2023 convention.

For those of you who have signed up to receive the convention gifts,
the fee will remain \$200, but for those who have opted out, the fee is \$165.

Please make your check out to TL Queen of Dolls and send to:

Jacque Schwegmen
814 McGuffey Ave
Oxford, OH 45056
513-523-2493 land line

Questions regarding fees contact my land line that has a recorder. I will call back ASAP.

And please enclose a note with ALL of your contact information
if you would like it included on the attendee list
(current mailing address, phone #, and email)

FYI

Breakfast and lunch will be provided both convention days

Direct your questions to:
Sherry Ferguson, sgferguson2@icloud.com
Shelia Meyer, tldollcollector@gmail.com



Terri Lee



Sue Munsell

