

Volume 26, Issue 2  
May 2016

# The D a i s y C h a i n







terrybukowski@yahoo.com  
gkittoco@adelphia.net  
 sandilee43@roadrunner.com  
 ratherpat@vom.com  
jerrileedoll@yahoo.com  
 mroden@calstatela.edu  
 contrary128@gmail.com  
 http://wwwterrileedolls.com

**To print the newsletter in color go to our Web Page:** <http://www.terrileadolls.com>  
In the box at the upper left called Subscriber Password type Daisy Chain 2016 **(You must capitalize the( D & C) our password is case sensitive)** Click on Login. Then click on the second box on the left in the upper menu, the box which says Current Issue. Scroll down to see the article and double click to enlarge the page. Click on download to print in color. **This will be our password for the year to make it easier for you to remember.**

The Daisy Chain staff are working on some changes to our web page. Starting with the Accessory Book we started years ago and handed out at our Daisy Chain conventions. A library is going to be set up containing the handouts, the first will be Hand Held Accessories. By having this library you will have one place to go to research and print the items you are interested in. In the newsletter is the index the web page will contain. I hope this will be of interest to you and you will use it.

Also the 2015 Daisy Chain Newsletter Index will be updated and placed on the web site for you to find past articles.

Little Mother Corrections:  
Marlena Hemphill – Gdodie1@yahoo.com

**The Daisy Chain magazine and Little Mothers Talk is for personal use only and may not be sold in any form. Furthermore, all pictures and articles published are solely the property of the Daisy Chain and cannot be reproduced or sold without permission. © 2016 The Daisy Chain**

## Changes to Little Mother's Talk: Judy Stasik - Town is Kenosha

©2016 The Daisy Chain



Hi Everybody!!

Spring 2016! Lots of new things in TerriLeeLand! Who could have missed the appearance of the rarest of the rare, the fabled white unicorn of Jerri's masquerade outfits?

Painted Terri on right is still trying to get a peek at it! No one really knew if it existed or not, but we did think there had to be at least one, and now here it is! Check **Sandy Dorsey's** amazing articles in this issue. Read all about it!

So how's *your Accessory Book* coming along? Have you printed out pages from the *Daisy Chain* web site yet and put them in a binder? **Terry Bukowski** has been busy posting them!!!

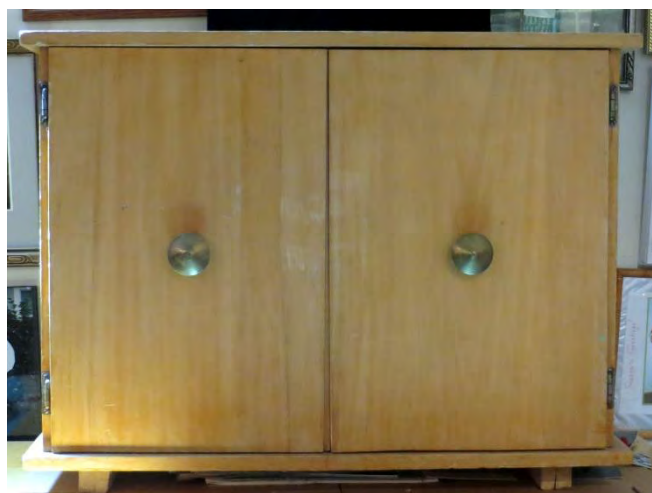
Look at this neat letter from **Cookie Bolig**:

Good Morning chatti,

First of all I want to thank you. Recently (the last few days) I was inspired to update my *Accessory Book* and make sure all I had was in order. The recent *Daisy Chain* (Feb 2016) was an inspiration of sorts. Anyway, I marveled at all the research that you have done. It is incredible. I always knew you did a lot, but seeing it in **my Accessory Book** was amazing! For all you've done to date, I thank you. Great work and so much appreciated.  
Cookie

Ah, sweet words of praise for all that work done so long ago in the mid-1990s by **Terry Bukowski**, **Glenda Kitto** and **Pat Rather**, *The Acc Bk Three*, and all the other DC researchers! Bettcha thought all that stuff was in **Peggy Casper's** book?! Not!!

Below: two original examples of the DeLuxe Wardrobe Chest. Don't miss Pat's short article on a *Jr Magazine* ad for some other **Rohanna** products. Send me some TerriLeeLand news, guys! I want to print your names here!! Talk to you later! Cheerio! **chatti**



# The Masquerade Mystery

by Dennis Ross

Jerri Lee's big brown eyes nearly bulged out of his head when we came across an eBay item. We found it listed under the Terri Lee/Jerri Lee category. There it was! We gazed at the pattern of the fabric - yes it matched Terri's masquerade outfit! Nervously we scrolled down and looked carefully at the additional photos. Nice and clear they were. It truly was Jerri's outfit which we had wondered about for over two decades! We know Jerri doesn't have a matching outfit for every single one which his sister, Terri had. He has complained for years how he got shortchanged, as he so indelicately described it. But we had a glimmering hint when decades ago we first saw an old coloring contest with both Terri and Jerri drawn in matching outfits - but his never, ever showed up. We knew it was an older outfit for Terri - in fact, her first masquerade costume. But nobody - no, nobody had this outfit in any collection we knew of. No one!

And so, the thought of his mystery outfit had almost faded away until this very moment! It was pictured right before our eyes! "Oh, please, Little Father, can we bid, oh can we please! Please!" Now tell me, how can one refuse such a plea? "Yes, we can but you know it is extremely rare and will probably go for a very high price." We were trying to not get Jerri's hopes up too high in winning this rare outfit.

Rare? How rare you ask? Well, supposedly, as the story goes, only thirteen genuine blue-mink coats were created for sister Terri Lee. So yes, they are considered rare. Only about four are accounted for in private collections. They have gone as high as \$4000. So, how many of these Jerri masquerade outfits were made? We'll probably never, ever find this out but we now know of at least one - the one right there on eBay and our little Jerri was beside himself wanting to be the lucky owner of it, "Please? Please. Can we bid??" pleaded Jerri. "I'll try" I quietly told him.

I put in a bid and it went to \$300. Jerri's eyes grew wide and his mouth opened but nothing came out. "\$300 doesn't get us as high bidder?" he asked sadly. "No", I patiently explained. He looked so pitiful sitting there beside the Apple computer that I put in a higher bid, \$380 - we were high bidder. "Yea!" Jerri exuberantly shouted. "I can hardly wait to wear it. Look, the shoes, the mask and the hat - just like Terri's are all included! It's a complete costume!"

“Yes, it is Jerri, but remember this is an auction and the most important part is contained within the very last few seconds. So please don’t count on it because it is perhaps the rarest outfit we’ll ever see. “And it’s mine!!!” he whispered.

I could see this was going to be a very very long week - 6 days to go. Each day Jerri begged to see what he kept referring to as HIS new costume on the computer. On the third day we got outbid. It had jumped up to \$400. Jerri was crest fallen. A little tear slid down his cheek. I couldn’t stand to see the little guy so disappointed but how high were some collectors prepared to go? \$2000? \$3000? \$4000 - just as the mink coats had been purchased for? A few days later it had settled at \$480. Perhaps that was going to be it ... but you never can be sure, can you?

Unbeknownst to Jerri, we put in what we considered to be an extremely high bid. Finally the big event day had approached. It was a pleasant Saturday, so we could watch the auction leisurely but nervously. Only a few more hours. Only a few more minutes.

Oh no! Now was the time I’d warned Jerri about. Those last few seconds. We hoped we would be able to break the fantastically good news to Jerri that he, indeed, was the rightful and extremely fortunate owner of perhaps the only first masquerade costume created for the Jerri Lee doll. The numbers changed! The final winning bid flashed upon the computer screen: \$1633.

We had lost out. And now we had to break the news to poor masqueradeless Jerri. It was going to be a tough job to let him down.





# EARLY TL Company Wardrobe Chests

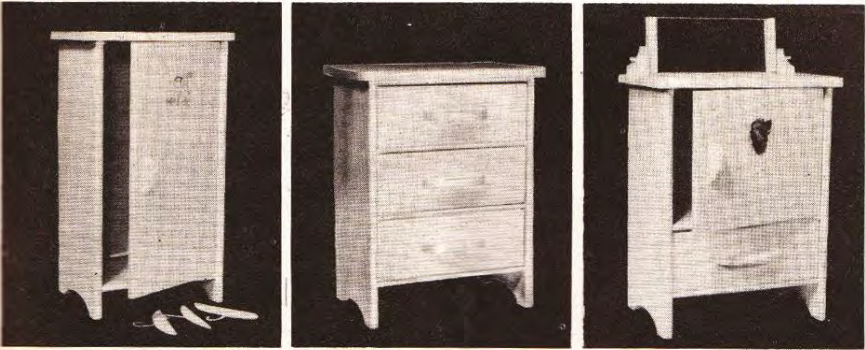
By Pat Rather

## On the track of TL Furniture

...an interesting ad has turned up!!

The Terri Lee Company began advertising wooden chests for Terri and Jerri's clothing in the #1 *Lincoln, NE Fashion Parade*, dated to 1948. They featured a Deluxe Wardrobe in "My Wardrobe Treasure Chest", #1001, and they pictured a smaller wooden cabinet for "Terri and Jerri's Wardrobe" #1000 and #2000, on page 26.

In the November, 1948, issue of *Jr The Magazine for Boys and Girls*, in a two-page, "Toy Shelf" Christmas gift idea spread, the TL Company was still advertising their light blue clothes rack with the tiny rosebud decals, the one designed for and pictured with a compo doll. However, farther on in this issue, on page 53, is an ad for a cabinet identical (except for the decal) to the



**PUT AWAY YOUR DOLL THINGS  
JUST LIKE YOU DO YOUR OWN!**

Your doll's dresses, panties, shoes and stockings, undies, coat and hat, and other choice pieces have a special spot in these lovely cabinets. What a joy they are to any young mother. Each cabinet carefully styled to fit their needs. Beautifully painted in pastel shades of pink or blue, also comes in maple.

Wardrobe—17¼" high, 9¾" wide, 7" deep	
Postpaid .....	\$5.50
Chiffonier—18½" high, 10½" wide, 7¾" deep	
Postpaid .....	\$6.50
3-Drawer Chest—14¾" high, 10½" wide, 7¼" deep	
Postpaid .....	\$6.00

(Sold separately or in a suite.)

one on page 26 of the 1948 *LNFP*. Perhaps the toy furniture company decided to advertise in *Jr. magazine*, too.

No manufacturer is listed in the ad, but we know that it was **Rohanna**, a company in Saginaw, Michigan. Their sticker has also been seen on the Deluxe Treasure Chest Wardrobe. The small wardrobes have been found in white and pink. Happy Hunting!



# The Best of all Valentines

by Dennis Ross

Jerri Lee was dressed in his cowboy outfit and playing outside in the Apple Valley sunshine when the friendly mail carrier came bringing the daily mail. Magazines, bills, letters, and a card addressed to Jerri Lee. Well, how nice! Jerri smiled as he opened up the envelope and found a very special Valentine card made especially for him. It was created by Little Mother Sue Munsell who lives in St. Louis, MO. Jerri clutched it to his chest lovingly and then shouted to Connie Lynn, Linda Baby and sister Terri to hurry over to see the best Valentine ever created!

It really, truly made his day. Thanks for making the little guy extremely happy, Sue!





# Do You Believe in Magic?

By Sandy Dorsey (yoursterrilee)

If I were writing this article a few months ago it would be very different. That is because of the recent discovery of the rarest Jerri Lee Masquerade costume. Do you believe in Magic? Discoveries like this are what keeps Terri Lee collectors interested year after year. Masquerade costumes are a favorite with Terri collectors and some are hard to find but one was impossible

for the last 40 years. And then it suddenly

appeared on ebay. There was a picture of the Jerri Lee masquerade costume that matched Terri Lee's hard to find masquerade in red, black, gray and white striped seersucker but no one actually had the costume. It was used for a coloring contest by Thompson's Toy and Gift store in Alliance Ohio. The same picture was also used on the merchant's order list for 1954. Did Thompson's actually have the dolls in the coloring contest? Who were the winners and what did they win. Questions I have not yet been able to answer. The librarian in Alliance looked up the newspaper ad for me and it appeared in the Alliance




Review on October 20, 1954 and also on October 22, 1954. They seemingly did not publish the winners in the newspaper.

Edith and Thomas Thompson and their family were active in the Alliance Ohio business community throughout their life. A Thompson's Corner Café is listed in Alliance from 1938 to 1941, Thompson's Dairy and Lunch from 1942 to 1944 and Thompson's Restaurant from 1946 to 1950. Thompson's Toy and Gift Store existed from 1953 until 1955. They were listed as a Terri Lee Fashion center in Terri Lee literature. Both owners passed away many years ago, Edith in 1988 and Thomas in 1990. They had one or possibly two sons whom I have not been able to reach.

Promotional pictures were taken either at the Apple Valley plant or maybe still in Lincoln, Nebraska. The Apple Valley plant opened in 1952 so by 1954 most likely the pictures were taken there. Were the two dolls in the picture in Apple Valley? So far I have not been able to answer those questions. Below on the right is a merchant's ordering page for 1954. Jerri Lee in Masquerade is listed as 1540 TN \$14.95 for dressed doll and \$3.95 for costume only. Number 540TN is Terri in Masquerade Costume "in assorted fabrics in Pierette type costume, nylon net under flounce, matching panty and black mask:

\$15.95  
for  
dressed  
doll."

OFFICIAL ENTRY BLANK  
**TerriLee** COLOR CONTEST



**COLOR OUR COSTUMES AND BRING THE ENTRY TO YOUR Terri Lee STORE DO IT TODAY!**

PLEASE PRINT CLEARLY

NAME \_\_\_\_\_ ADDRESS \_\_\_\_\_

CITY \_\_\_\_\_ STATE \_\_\_\_\_ PHONE \_\_\_\_\_

BIRTHDATE \_\_\_\_\_ DO NOT OWN A TerriLee Doll!

**Featured Terri Lee Dolls and Fashions**

Catalog #	Photo Description	Retail Price
6657	TERRI Cut out dolls in 3-D—Vinyl plastic cut out dolls in 3 dimension. Bodies of Terri Lee Doll with 12 authentic costumes	\$2.95
540NN	TERRI in Summer Farnel—Long dress in blue, white, and pink, short sleeves, with broadish gathered ruffled with movement flish ruffled hemline	\$14.95
3540NN	Summer Farnel and Petticoat Only	3.95
1540TN	JERRI in Masquerade Costume—Matching novelty fabrics with Terri costume	\$14.95
6540TN	Ray Masquerade Set, hat and mask	3.95
540TN	TERRI in Masquerade Costume—Assorted fabric in Pierette type costume, nylon net under flounce, matching panty, black mask	14.95
3540TN	Masquerade Dress, Hat and Mask Only	3.95
320E	TERRI in Gaze Astry Bodice Costume—Broadish riding pants, pointed spine under skirt with point heels, riding boots and hat	\$15.95
3550E	Gaze Astry Bodice Costume Only	4.95
1550E	JERRI in Gaze Astry Bodice Costume—Matching set to Terri Costume	15.95
4550E	Gaze Astry Bodice Costume Only	4.95
1140TE	Terri and Jerr in Gaze Astry Costume—Unisex by Gaze Astry	11.95
1550G	JERRI in Riding Costume—Dressy jeans, denim cowboy shirt, holder with gun, belt, hat and boots	\$15.95
4550G	Riding Costume Only—Complete as on Jerr	4.95



**TerriLee**  
SALES CORPORATION  
APPLE VALLEY, CALIFORNIA



The Ebay seller of the striped Jerri Lee Masquerade Costume states that she recently purchased a box of dolls from the niece of the original owner. The original owner lived in North Carolina. She also sold a Jerri Lee doll dressed in a different suit on ebay at the same time she sold the masquerade costume. Could he possibly be the doll in the coloring contest picture and merchant's flyer? Here is a picture of that Jerri Lee doll and he has similar hair. We cannot see his face in the ad so it is hard to tell. Jerri looks to be in excellent condition. The Masquerade costume was also in excellent condition and complete with hat, black mask, and black shoes.



The 1954 Fashion Parade was the first to offer Terri Lee and Jerri Lee in Masquerade Costumes but it shows them in Black and white checked satin with the same order numbers as this very rare version.

Which came first? The striped version or the harlequin version?

Read my Masquerade Time Line to help you decide.

# Benjie Wins First Place

by Dennis Ross

At the recent Potpourri Day held annually in San Diego, Benjie was awarded a First Place Blue Ribbon. How did this come about you ask? Well, dear reader, read on.

Little Mother Sandy Dorsey was looking over the competition categories to see if one of her many Terri Lee doll family members could be entered into the contest. At last, she spied a category which Benjie would fit into beautifully: Ethnic Doll-Modern Plastic. Benjie actually disliked leaving his comfortable environment but Little Mother Sandy assured him that it would not be for too long. She wrapped up Benjie carefully and jaunted off to the hotel which was hosting the affair.

Potpourri Day is put on by the many local doll clubs in the San Diego area. Every year, each club is assigned a different duty to perform. The function is actually based upon the National UFDC convention but shortened and condensed into one day. There are multiple sales tables, round table doll discussions, a delicious buffet luncheon and always an interesting speaker presenting a doll related topic. But most importantly to Benjie, there is competition of dolls.

Sandy had written all the important information on the papers provided, tied the identification paper around Benjie's wrist, and posed him on his doll stand. "Good luck, my dear boy", Sandy whispered as she departed the competition room. Benjie was now surrounded by many dolls of all kinds. There were antique dolls, ball jointed dolls, and some, as he was, made of plastic. Soon the judges came into the room and all the dolls stood at attention and tried looking their very best. Bennie heard their hushed voices and suddenly was elated when a shiny blue First Place ribbon was draped onto his wrist. He had won! Oh, how happy Benjie was. He could hardly wait to see his Little Mother Sandy's face when she came back in to check on him. Wouldn't she be surprised? You bet!

[SEE PHOTOS NEXT PAGE]





Sandy Dorsey With Her Prize Winner



Sandy's Matching Duet



First Place Prize Winner



Ethnic Doll Competition





## Wool Plaid Terri & Jerri Sets

By Glenda Kitto

We should all be thinking about redressing Terri & Jerri in their Summer Suits but we are having a brisk windy day that calls for something a little warmer. Looking through our wardrobe a nice Plaid Wool matching set seems like the best ticket for today. In the Lincoln Fashion Parade's we had those wonderful wool flannel sets and now in the 50's we have become boulder with a variety of plaids.

Jerri was not forgotten and we find a TL & JL match for just about all the plaids. The 1953 September Monthly Magazine featured the plaids on the cover and the 1952 Fashion parade had a two-page layout of plaids.



The sets most often came with a white silk/rayon blouse/shirt. A few of the sets had a matching solid colored top. You may have noticed that I have excluded the solid wool skirts/shorts and that is intentional. This is all about the Plaid Skirts and Shorts!

The primary shirt was white and as shown above there are matching red, blue and pink blouses or

shirts. Jerri would have had a bow tie with his. Terri's shirts were either decorated with the flat pearl buttons (with snaps under the fold) or pearl style buttons and Jerri had the traditional flat pearl buttons and button holes. And always the distinction between TL and JL tops as Dennis always reminds us: "Boys to the right and girls to the left."





The sets came in a variety of TL skirts styles:

1. The large V straps – jumper style
2. The straight waist band with narrow straps
3. The heart shaped center waistband



Jerri's shorts always have the small suspenders that would cross in the back.

Terri did have a plaid skirt in 1948-50 which would have been the Scottish Outfit. Not until 1952 is a wool plaid set shown for both dolls. There are more plaids than what I have shown here. By 1956 the wool was phased out and the cotton jumper was the new fashion. Cost I'm sure had an impact to this.



The catalog numbers:

#3530L 1952 Jumper style wool plaid pleated skirt with blouse

#3530M 1954 Skirt (no suspenders) Plaid or solid pleated skirt with silk blouse.

#2861 1956 JL Wool Suit and Cap

Jerri's outfits are shown in the catalogs and monthly magazine however there is not a unique stock number for his other than #4520B Short pants and shirt. I can only make the assumption that ALL of Jerri's shorts and skirts used the same stock number...cotton, wool, Or ?? We know he had a plethora of shorts Jerri was just short changed when it came to a change of stock numbers.

There are more plaid outfits and I would like to hear from you about what is in your collection.

[gkittoco@roadrunner.com](mailto:gkittoco@roadrunner.com)

# Magical Masquerade Costumes

By Sandy Dorsey  
(yoursterrilee)

This story was waiting for the final piece before it could be written. The Terri Lee world now has a real Jerri Lee masquerade in the black, gray, white and red striped fabric. Since these very rare striped masquerade costumes were introduced in 1954 there probably would not be Tiny's to match. Tiny Terri Lee was introduced in 1955 and Tiny Jerri Lee in 1956. As with many of the Terri Lee outfits masquerades came in a variety of fabrics and also a variety of combinations of those fabrics and trims. As if to emphasize the drama



of a masked costume, there are many versions. The hardest to find masquerade costume for Terri Lee is described as “ a Pierrette type costume with a nylon net under flounce, matching panty and mask.” Pierette being the feminine of Pierrot, French for a clown with a white face and loose costume with large buttons or originally a French pantomime. The costume is made from the “Toe Dancer pattern.” Terri's has been seen with two or three red bows with or without gold brads on the bodice and with matching solid red panties. The hats for both Terri Lee and Jerri Lee are seen in white and red polished cotton with a black pompom on the top. The costumes in this fabric are not seen in the Monthly booklets nor are they in any Fashion Parades. This version is only seen in the Merchants list of 1954 and the coloring contest shown in my previous article. Terri's costume is hard to find but there were many made. Jerri's outfit had never been seen in real life until March of 2016. So how could that happen? I would speculate that there was something about the fabric that made Violet Gradwohl change it. Probably it was too expensive or imported and too hard to get. How did it happen that Terri's outfit was manufactured but not Jerri's?

Your guess is as good as mine. Possibly Vi had just a small amount of the fabric and it was easier to make Terri's costume because it took less the fabric and it sold for the same price as Jerri's. The price on both outfits was \$3.95.



Therefore it would be the best business decision to make Terri's costume with the amount of fabric she had on hand.

Magical Masqueraders were first introduced in the 1954 Fashion Parade which I presume appeared in early 1954 but I am not positive. The 1954 Fashion Parade magazine was all in black and white. It was distributed with each new doll in her box along with the Fashion Centers book and a price list. Masqueraders appear on page 24 in a black and white checkered satin costume with black shoes and black masks. Terri Lee in Masquerade 540TN is \$14.95 and Jerri Lee in Masquerade 1540TN is also \$14.95. If this outfit was photographed for the Fashion Parade in early 1954 then it is possible it was made before the hardest to find version in striped fabric. However the striped version may have been photographed earlier and not used in the Fashion Parade but then used in the flyers sent to stores. But I would think they would want the latest version on the sales flyer. Black and white masqueraders also appear in the October 1954 Monthly booklet but they are artist's renditions and not photographs.







Black and white satin masqueraders appear on the cover of the October 1955 Monthly booklet so it appears that by 1955 this is THE masquerade costume.

Tiny Terri Lee in black and white satin masquerade is introduced in the 1955 "Presenting Tiny Terri Lee" booklet. #3365 is a masquerade party "Pirouette Costume" \$3.69. Notice the misspelling of "Pierette." This is the only appearance of Tiny Terri Lee in a black and white masquerade costume. It is before Tiny Jerri Lee was introduced.



Notice top and bottom switches and colors on Tiny Terri Lee changed. Even the hats have opposite versions.



The black and white satin masqueraders also came in hot pink and black satin for Terri Lee and Jerri Lee. I have never seen the pink and black costumes for Tiny Terri Lee and Tiny Jerri Lee. If you have one please email me.

Sandilee43@roadrunner.com. Again notice the variations of the

checks on the skirt or on the bodice and also on the hats. Jerri's costume comes with checks on the left or on the right.



The pink and black costume is not shown in literature and I would suppose that the order number remains 540TN for Terri Lee in Masquerade Costume and 3540TN for Masquerade costume only for the pink and black costume. This was the order number on the merchants order sheet of 1954 showing the striped Masqueraders and it remains the same for the Black and white satin

Masqueraders. The Jerri Lee order numbers remain the same also.



The "Meet the Terri Lee Family" Fashion Parade of 1956 introduces the red and white cupid Masqueraders and Clown pajamas made from the same pattern as Jerri's Masquerade costume. Page 24 is titled "Masqueraders and to Bed." The pictures are black and white but the mask on Terri Lee appears to be red and Jerri's mask appears to be black. The order numbers change in this Fashion Parade to 1140 for Terri in Masquerade Costume and the price is dropped from \$14.95 for the earlier versions to \$13.95 for this one. The costume alone order number is 1340 and the price remains \$3.95. Jerri's order number is now 2123 for dressed doll

and 2323 for costume alone. The same photograph is also shown on the back cover of the October 1956 Monthly Booklet.

Tiny Terri Lee and Tiny Jerri Lee in red and white satin Masquerades can be seen in "Presenting Tiny Terri Lee" booklet of 1956 and also in October 1956 Monthly Booklet. They are both the same photograph and appear to be red and white satin costumes although they are printed in black and white. The ordering numbers have changed for Tiny Terri Lee. The Black and white Tiny Terri Lee Masquerade party "Pirouette" Costume was 3365 in 1955 and the price was \$3.69. The new numbers are 3140 Tiny Terri Lee in Masquerade for \$5.79 and Masquerade costume alone 3340 for \$2.49. Tiny Jerri Lee in Masquerade Costume is number 4123 for \$5.49 and his costume is 4323 for \$2.19. All four



3140 Tiny Terri in  
Masquerade  
Costume 5.79

4123 Tiny Jerri in  
Masquerade  
Costume 5.49

3340 Masquerade  
Costume 2.49

4323 Masquerade  
Costume 2.19



of the red and white Masquerade Costumes are shown on the back of the October 1958 Monthly magazine. They are listed without order numbers. Big Terri and Big Jerri's costumes remain at \$3.95 but the Tiny Terri Lee and Tiny Jerri Lee costumes have been dropped to \$1.95. The fire in Apple valley occurred in November of 1958 and Terri Lee sales Corp. was in trouble before that. Only 3 monthly booklets were published in 1957 and this October monthly booklet was the only one published in 1958. Marvin Miller was arrested for arson just before Christmas.





Sue Munsell's Masqueraders Collection



# *Little Mother Sews A Masquerade for Tiny Jerri Lee*

by MARY M. HAYDEN

In the November 2015 issue of the Daisy Chain, you have the pattern for Jerri Lee's clown pajamas. That is exactly what you will need to start making Jerri Lee's Masquerade costume.

To finish the masquerade, you will need to make a clown style hat for his head.

Start by making an eleven" circle on a piece of paper, mark the center.

Fold the circle in half and then in half again, 1/4<sup>th</sup> of the circle will be your pattern.

Cut one piece of the hat pattern from satin your color choice and one piece from a matching tulle.

Place the fabric right sides together. Sew a 1/4" seam along the arc. Turn to the right side and press.

Open the seam and sew the long straight edge from the tip of the satin to the arc seam and up the tulle, leaving about 3 inches unsewn.

From this unsewn area turn the hat right side out.

Cut a piece of contrasting tulle for the ruffle, 36" long by 1 1/4" wide. Run a gathering stitch down the center of the tulle, gather and sew to the lower edge of the hat. Add a contrasting pom pom to the top, slip stitch remaining tulle seam on the inside hat and you are done.



A mask for Tiny Jerri Lee can be made of felt or a piece of heavy black plastic, tack elastic on edges and he is ready to go to the party!

If you do not have the pajama pattern email me and I will send it to you, Thanks,  
M



# JERRI'S FUN PAGE

by Dennis Ross



**What do you get when you cross an elephant with a fish?**

***Swimming Trunks!***

**When does B come after U?**

***When you take some of its honey!***

**What do you call a car when its sun roof is left open overnight and it rains?**

***A car pool!***

**What is the rudest shade of purple?**

***Burple!***

**Where does a sick ship go?**

***To the dock!***

**What does a religious man use to cook his food?**

***A friar (fryer)!***

**Did you hear about the fire at the circus?**

***It was in tents!***

**What is a dog's favorite snack?**

***Pup corn!***

# Masquerade Time Line

By Sandy Dorsey (yoursterrilee)

**1954** Fashion Parade Masqueraders Black and white satin harlequin

Terri Lee 540TN \$14.95 Jerri Lee 1540 TN \$14.95

3540TN Costume for Terri \$3.95 4540TN Costume for Jerri \$3.95

**1954** Merchant's Order flyer Striped version pictured "Assorted fabrics" Offered

Terri Lee 540 TN \$14.95 Jerri Lee 1540TN \$14.95

3540TN Terri's Costume with mask and hat \$3.95

4540TN Boy's costume with mask and hat \$3.95

**1954** October Monthly Booklet Black and white satin harlequin

Printed by Nebraska Farmer Printing Co. Lincoln, Nebraska

Terri Lee no # \$14.95 Jerri Lee no # \$14.95

Terri or Jerri Costume \$3.95

**1955** Terri Lee Monthly News Bulletin to Merchants (Peggy Casper's Book)

November 1955 Tiny Terri Lee fashions #3365 Masquerade Costume \$3.69

**1955** "Presenting Tiny Terri Lee" 1955 Terri lee Sales Corp

Tiny Terri Lee # 3365 Masquerade Party Pirouette Costume \$3.69

Solid Black and white satin in various combinations

**1955** October Monthly Booklet cover Black and White satin harlequin

Terri's Masquerade Costume 3540TN \$3.95

Jerri's Masquerade Costume 4540TN \$3.95

**1956** Fashion Parade Red and White Cupid Masquerades

Terri Lee #1140 \$13.95 Jerri Lee # 2123 \$13.95

Terri's Costume #1340 \$3.95 Jerri's Costume #2323 \$3.95

**1956** "Presenting Tiny Terri Lee" 1956 Terri Lee sales Corp

Tiny Terri Lee #3140 \$5.79 Dressed doll Red and white satin

Tiny Jerri Lee #4123 \$5.49 Dressed doll Red and white satin



1956 October Monthly magazine 1956 Terri lee Sales Corp  
 Tiny Terri Lee #3140 Dressed doll \$5.79 Red and white satin  
 Costume only #3340 \$2.49  
 Tiny Jerri Lee #4123 Dressed doll \$5.49 Red and white satin  
 Costume only 4323 \$2.19  
 Terri In Masquerade #1340 no price Red and White Cupid  
 Jerri in Masquerade Costume #2323 no price Red and white cupid

1958 October Monthly Booklet 11958 Terri Lee sales corp.  
 Picture of all four on back cover Tiny Terri and Tiny Jerri in solid red  
 And white satin; Terri and Jerri in Red and White Cupid  
 NO ORDER NUMBERS given: Prices Costume only TL and JL \$3.95  
 Tiny Terri and Tiny Jerri \$1.95

1958 November: Fire at the Terri Lee Plant in Apple Valley



Because Tiny Terri Lee was introduced in 1955 and was shown in the 1955 booklet in a black and white satin costume before Tiny Jerri Lee was introduced in 1956 I believe there is a possibility that Tiny Jerri Lee was not available in the black and white costume. In that line of thinking he would not be available in Pink and black costume either. BUT Tiny Terri Lee might be available in PINK and BLACK costume? Why not?

The only person I can find with a black and white Tiny Jerri Lee Masquerade

Costume is Rhecia. It is NOT tagged. Rhecia is not sure whether it is original or not.

Terry Bukowski's Tiny Terri Lee in black and white Masquerade Costume.











