

# The Daisy Chain

Volume 25, Issue 3      August 2015







# PATTY-JO 'n' GINGER

JACK  
ORME



Editor:	Terry Bukowski	(210)651-4584	<a href="mailto:terrybukowski@yahoo.com">terrybukowski@yahoo.com</a>
Associate Editor:	Glenda Kitto	(909) 599-0585	<a href="mailto:gkittoco@adelphia.net">gkittoco@adelphia.net</a>
Co-Editor:	Sandy Dorsey	(760) 731-6581	<a href="mailto:sandilee43@roadrunner.com">sandilee43@roadrunner.com</a>
Chattipatty:	Pat Rather	(707) 996-8300	<a href="mailto:ratherpat@vom.com">ratherpat@vom.com</a>
Jerri Lee:	Dennis Ross	(626) 446-9678	<a href="mailto:jerrileedoll@yahoo.com">jerrileedoll@yahoo.com</a>
Production Supervisor	Marty Roden	(626) 446-9678	<a href="mailto:mroden@calstatela.edu">mroden@calstatela.edu</a>
Web Page:	Eric Silva		<a href="http://www.terrileedolls.com">http://www.terrileedolls.com</a>
Pattern:	Mary Hayden	(360) 642-2151	<a href="mailto:contrary128@gmail.com">contrary128@gmail.com</a>

**The Daisy Chain magazine and Little Mothers Talk is for personal use only and may not be sold in any form. Furthermore, all pictures and articles published are solely the property of the Daisy Chain and cannot be reproduced or sold without permission. © 2015 The Daisy Chain**

**Articles for the next Daisy Chain are due to Terri Bukowski no later than 1 November for submission into the November 2015 Newsletter.**

**To print the newsletter in color go to our Web Page:** <http://www.terrileedolls.com>  
In the box at the upper left called Subscriber Password type Bubble **(You must capitalize the B our password is case sensitive)** Click on Login. Then click on the second box on the left in the upper menu, the box which says Current Issue. Scroll down to see the article and double click to enlarge the page. Click on download to print in color.

Thrift Stamps: Thank you for contributing

♥ Cookie Bolig ♥ Paulann Chrisner ♥ Nancy Goldstein (2) ♥ Judie Miles ♥ Sue Munsell (2)  
♥ Karlie Nelson ♥ Dorene Reed ♥

I have a limited number of 2015 convention TTL outfits left \$26.00 includes postage.

**Front Cover** ~ **Collection of Karlie Nelson**  
**Front Inside Cover** ~ **Collection of Dorene Reed**  
**Back Inside Cover** ~ **Collection of Judie Miles**  
**Back Cover** ~ **Collection of Nancy Goldstein**

©2015 The Daisy Chain



## HI EVERYBODY!!!

Whooooooooo! Convention 2015!!  
So, a change of management, a change of name! **chattipatty**'s hat is off to **Terry Bukowski** and **Glenda Kitto** who carried off our *DC Con* gatherings graciously and gracefully for over 20 years.

**Terry!!! Glenda!!!** Thanks a million for your generous service to the TL community! Both you gals were

always pleasant, always patient, always multi-tasking, and always well-informed! We salute you both with a twenty-one gun salute!!

In honor of change, & inspired by **Nancy Goldstein**'s presentation on the *DC* newsletter, **chatti** and **Pat Rather** are going to do a retrospective series on research and researchers from the *Daisy Chain*. We'll kick off with a summary of Nancy's presentation which outlined unique characteristics of our newsletter. In future issues, we'll continue with details about researchers & their research, the Accessory Book, TL Friendship Magazine Project, Christmas Card Club, Birthday Card Club, art projects, categorizing of all TL stock numbers and garments, etc. etc.

Hey!! Just so you know her *bona fide* and don't wonder who the heck... **chattipatty** was just like a *donut* in the *DC* two-pronged organization of newsletter and convention. OK, so she and Pat *were missing* a bit in the middle, but they've been around all the other times as part of the con org, as one- third of the original *Daisy Chain* staff (along with Terry and Glenda) and even as emeritus researcher after she had sold most of her collection between 2004 and 2011. Yep! chatti has been an involved party, a refugee, a by-stander, a recidivist! After all, **collecting is character building!!!** And don't you forget it, **chatti!** See ya-all next time!

Below: **Cookie Bolig** and **Sue Munsell** *resurrected* Mary Jane for a wonderful presentation comparing MJ and TL garments. Pat, emeritus, introduced their show, selling some copies of "The *Almost* Complete Mary Jane," a record of MJ's clothes and history, information available nowhere else. There are two left, \$15 + \$5.75 postage. Email me at [ratherpat@vom.com](mailto:ratherpat@vom.com).



I also found one more copy of "Who Will Shoe My Pretty Little Foot," at \$35. + 5.75 postage, and a couple of copies of my best chapter, all original research + updates, "Terri Lee Mint-in-Box" at \$30. + \$5.75 postage in flat-rate priority envelope. Send me an email, please, to reserve copies.

At right: **Bonnie Lou** with braids said to be painted by **Lee Platt** herself (signed stand) returned from convention unsold! She found a new a/o outfit and rejoined her friends on a Sonoma shelf.



## GIRLS JUST WANNA HAVE FUN by Sue Munsell

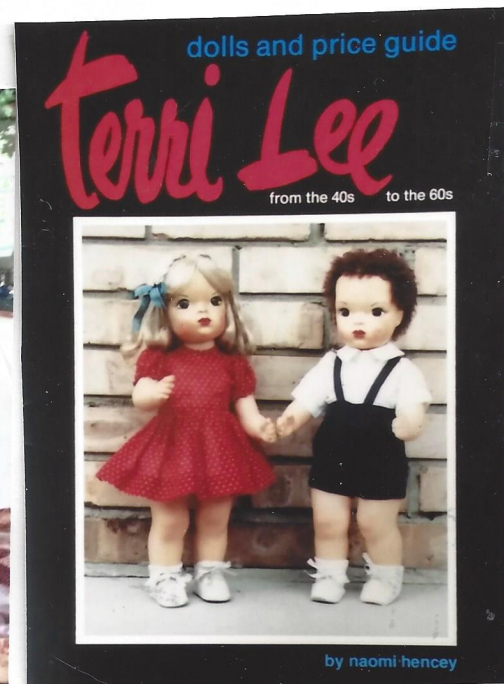
On a recent trip to Phoenix, Arizona I met up with three avid Terri Lee Collectors for Lunch-Donna VanDaele provided her dolls are dressed up in pink.



L-R.Donna VanDaele,Sue Munsell,Elaine Goulden,and Naomi Hincey

## THEN A BLAST FROM THE PAST

Naomi Hincey invited us to her beautiful home and we got to see her Terri Lee Collection. As you all know she wrote the first book on Terri Lee and it has proven such a help with all our collecting. Thanks so much Naomi.



**Terri Lee Heart Fund Costumes  
UFDC 2015 Kansas City, MO  
Dynamic Dialogs  
Presented by Cookie Bolig and Nancy Goldstein**



UFDC (United Federation of Doll Clubs), the national doll collecting organization, holds an annual convention that encompasses 5 days of doll activities. Our own Cookie Bolig and Nancy Goldstein have been attending as a team for many years and this year they collaborated on a program for the Dynamic Dialogs. This is a round table event where you present and “dialog” with attendees. It’s one of the best ways to introduce collectors to a focused segment of collecting.

Nancy and Cookie went all out with their presentation with many Terris in attendance. They also prepared a handout providing a brief overview of the Heart Fund fashions along with copies of many of the monthly booklets that featured Heart Funds on the covers.

Great Job and a perfect way to keep Terri Lee in front of non-Terri collectors. Our pretty little girls enjoyed showing off their fancy outfits at convention.

# Convention Display 2015

By Glenda Kitto

The Daisy Chain sponsored conventions, 21 years of gathering dedicated Terri Lee collectors is now in the history books. We have brought to convention attendees new and exciting Terri discoveries from factory workers, family members of both the Gradwohl's and the Ormes, a plethora of advertisements, letters from Vi Gradwhol, co-merchandisers and most recently true life stories from a lawyer in her adult life but was the child who was the voice on the Terri Lee records and photos of a Real Terri Fashion Trailer. Certainly not a complete list as it would take the creation of a complete "Terri-specific-encyclopedia" to list all the discoveries presented at our annual conventions. BUT, the collection of Daisy Chain Newsletters in just that...a Terri-specific-encyclopedia! It's a wonder that we consistently uncover nuggets of new information.

Our overall goal was to bring together Terri Lee collectors. These collectors have become friends for life.



We wanted to have each convention become a focused study of a variety of facets that made up the Terri Lee Doll Company. Our displays became a kaleidoscope of fashions and variations that made our doll truly the *Queen of Dolls*.

We studied Pajamas, Beachwear, Garden Parties, Weddings, School Dresses, Western Wear, Coats, Taffeta Party Dresses, Farmerettes, Pedal Pushers, Mint in Box, Majorettes, Skaters, Masquerades, Redingotes, Little Lady, Raincoats, Ballerinas, Squaw Dress, Cotton Dresses, Heart Funds, Irish Lassies and Nuns. We thought we saw it all...then up popped just one or two more items, a print, or a variation that was new to us.

As each presenter lead a discussion it provided a new thesis and opened our mind on what may have been going on in the mind of the Terri Lee Doll Company founder, Violet Gradwhol. This writer never tires of hearing a new point of view because how it is presented brings me new information or confirms what I thought I knew. It has been a great journey and one I know will continue.

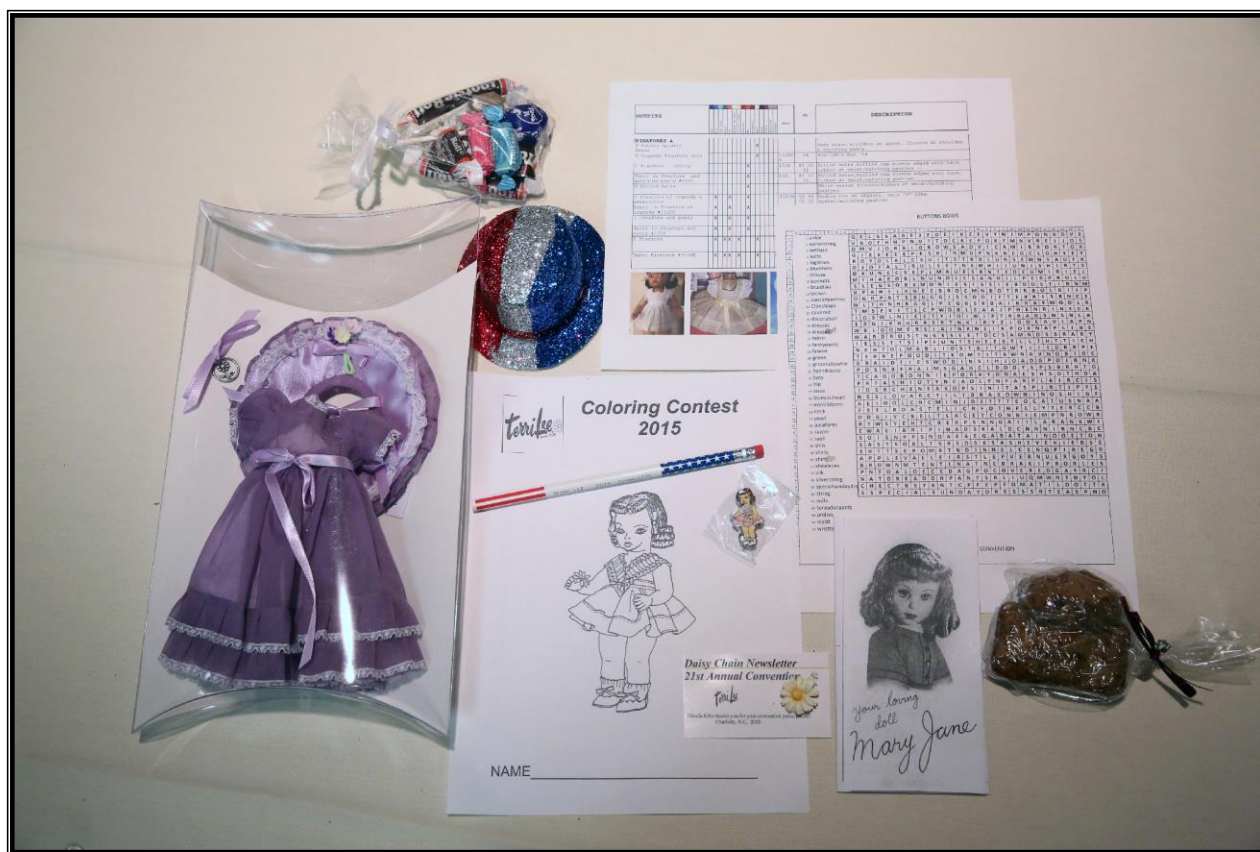


This year in Charlotte was no different. We studied Farmerette and Pinafore dresses. Terry Bukowski wrote many articles this past year on these outfits to prepare us. But, seeing them in person is exciting.



# Warm Summer Nights at NASCAR

Charlotte NC – 2015



## Convention gifts included:

Garden Party Dress, Slip, Hat (in purple) and Charm

Lapel Pin Terri in Pink Pinafore

Word Search game

Fashion Chart for Pinafores

Coloring Contest by Dennis Ross

## Given by the generosity of attendees:

Variety of Cake Snacks

Terri Lee imprinted pencil

Mary Jan Brochure

Fun Hat

Vintage Daisy

Shelia Meyer

Nancy Janzen

Cookie Bolig, Pat Rather & Sue Munsell

Terry Murphy

Glenda Kitto

# Competition 2015 Charlotte, NC

Competition always brings out the best of the best  
with crisp mint outfits!

In the mother made category there  
are generally few entries however  
the quality of the entries are  
outstanding!



TL & JL 1952 era  
Pique Suits - matching



TL & JL 1954 era  
Summer Suits - matching



TL & TTL - matching  
Duster W/Ponytail hat



TTL & TJL 1956 era  
Summer Suits - matching

**BEST OF SHOW** awards go to (lt. to rt.) **Shelia Meyer and Allison Kovaleski!**

This is not the first time Best of Show have been awarded to these entrants. They meticulously select the finest of outfits to present in competition. Hats off to both of you! Congratulations!



## LUNCH BUNCH

Pictures by Sue Munsell

Terri Lee Convention Charlotte NC 2015

A good time was had by all. Hope I didn't miss anyone.

If I did, I'll get you in the picture next year.



# Lionizing Our Terri Lee Newsletter, the *Daisy Chain*

By Pat Rather

In June, 2015, at the final *Daisy Chain* sponsored convention held in Charlotte, NC, **Nancy Goldstein** lionized the *DC* newsletter in her presentation, “The *Daisy Chain* Newsletter: One Reader’s Tribute.” She pointed out that our Terri Lee newsletter has been published continuously since



February, 1990. Presently, we are at Volume 25, Issue 3, which is to say, 25 years @ 4 issues per year + 3 = 103 issues to date. Averaging the number of pages per issue, *and counting issues from 1997 on, beginning with Vol. 7, Issue 1 (with its interim name, “The Newsletter”), and then Volume 7, Issue 2, the first issue officially named the “Daisy Chain,”* Nancy calculates that we have received more than 2,000 pages of information and pictures over the last 18 years!

Have you ever wondered about these Terri Lee newsletters that arrive in your mailbox four times a year? Terri Lee disappeared in 1962 and the monthly friendship magazines, published irregularly from 1951 to 1962, did too. Then in 1980 two Californians, **Lynn Kopatich** and **Hether Ludwick** thought to revive the “**TL Friendship Club**,” briefly publishing it for four issues. Two

years later, in 1983 and 1984, **Elizabeth Ford** in Michigan took on the challenge and published twelve issues of the “**Terri Lee Fan Club Newsletter**.” Our newsletter, the ***Daisy Chain***, which is now in its 25th year, has its February, 1990 roots in “**The Terri Lee Newsletter**,” which has been edited successively by **Sue Munsell**, **Betty Woten** and **Terry Bukowski et al.** Check your on-line *DC* Index for a longer article, “Terri Lee Friendship Club Fan-zines” by **Pat Rather**, covering these early years of TL newsletters.

Nancy compared the *Daisy Chain* most favorably to several other doll newsletters, and she named five distinctive *DC* features: research and preservation of history, analysis, collecting advice, sewing for TL, and finally, friendships and fun. In addition to four color-filled issues a year, subscribers receive an address book, “Little Mothers Talk”, an invitation to join the Christmas Card Club, birthday greetings, an on-line archive and Index, the option to buy a Terri Lee calendar, and thrift stamps as a reward for individual participation in the issue.

Who are people behind the Daisy Chain? Who are the editors, the feature writers, the researchers, the artists, and the people in the community who contribute and make the newsletter, “our” newsletter? Past newsletters faded away due to lack of participation, **so what is the secret of the Daisy Chain, now in its 25<sup>th</sup> year of continuous publication?** More next issue!!

# Bubble Sun Suit

By Terry Bukowski

Not much research is available for the bubble sun suit. Tiny Terri Lee is show in the 1955 Fashion Parade in #3306 outfit “ready for a sun bath” \$.79 and in the 1956 Fashion Parade #3104 Tiny Terri in sun suit \$4.19. This would put the bubble sun suit near the end of the Fashion Parades and makes since why Terri Lee didn’t get her picture taken for advertisement. The sun suit has gingham fabric on the bodice, the middle and the bottom section that make up the bubble sun suit comes in solid or gingham fabric. To the right is a pair from the collection of Paulann Chrisner.



Picture on left is from  
Dennis Ross’ collection



# 1946-47 Terri Lee Co. Brochures #1 & #2 & "THE NEW LOOK"

By Pat Rather

In 1946 and '47 the Terri Lee Co. produced two brochures advertising their dolls and clothing, the clothing we call "loopy tagged." Brochure #1, on left, showed a child's basic wardrobe: short dresses, PJs, rain coat, winter coat and three "specialty" o/fs. However, a vastly expanded Brochure #2, on right, presented many more specialty o/fs including Terri's well-known net formals or "ballets."



The most notable clothing in Brochure #2 was called "THE NEW LOOK." Terri Lee now had long, sumptuous garments. In these post WWII years, Dior advertised his opulent "New Look" to American woman, and so, it was decided that TL would be just as fashionable.

One of the most expensive NEW LOOK garments in Brochure #2 was the Long Coat and Hat Set, pictured here in pink and also in blue. The coat turns up with different shaped hats: some pointed (pink), some more rounded (blue) and others identical to the hat of the short winter coat. Note: dress under the blue coat is mother-made.



## Put Life In Your Doll Display

with

# Terri Lee DOLLS



"TERRI" WITH THE NEW LOOK

### *The Only Dolls of Their Kind in the World!*

More and more doll buyers are finding that in all doll-dom there is nothing to compare with the eye-catching artistry and exclusive features of the TERRI LEE line. Here are just a few of the reasons why TERRI LEE DOLLS are in a class by themselves:

- Made of exclusive unbreakable Celon material. Unbreakable, washable.
- Pert features that impart a truly lifelike expression.
- Exquisitely costumed in hand sewed garments notable for the finest materials and perfect workmanship.
- Every doll has a genuine mannequin wig that may be redressed and shampooed.
- Beautifully packaged as befits a top quality product.

Yes, before making your final 1948 doll commitments you owe it to yourself to investigate the fascinating TERRI LEE line—the line that is filling the demand for something really different in dolls.

*Write for Illustrated Catalog and Price List of the Complete Terri Lee Line*

## TERRI LEE COMPANY

FACTORY AND OFFICE

132 SOUTH 13th STREET

LINCOLN, NEBRASKA

SALES OFFICES and DISPLAY ROOMS

WEYERLY & ASSOCIATES, INC.  
1442 Merchandise Mart  
CHICAGO, ILL.

CLARENCE H. PHOENIX  
500 N.E. 39th Ave.  
PORTLAND 13, ORE.

McDONALD and SHAW  
Southland Hotel  
DALLAS, TEXAS

ED. HANSON  
1499 Holton St.  
ST. PAUL, MINN.

SHELDON & CO.  
340 West Broad St.  
HIGHPOINT, N. C.

Under the long coat are several rare pieces. First of all is the long taffeta dress with its interesting detail in front. Note that doll in the April, 1948 ad from "Playthings" has her coat open to show this detail. Collectors will recognize the dress as the "Bridesmaid's o/f from the 1948 LNFP.

The doll pictured here has large, matching taffeta hat still trimmed with a perfect ostrich feather. Several mint “NEW LOOK” TLs have been found with this particular face.

Less well-known to collectors are the special undergarments for “THE NEW LOOK” outfits. The pantaloons, simplified in later years, had a waistband and closed with a snap. Note the little blue bows at the bottom.



The special half-slip for “THE NEW LOOK” is longer than any other half-slip and trimmed in eyelet.



The ribbon on the dress and in the doll's hair is pink on one side, blue on the other. Splendid! Splendid!! Splendid!!!

# BATISTE SLEEPWEAR

By Terry Bukowski

The batiste nightgown has been available for sale since the very beginning.

Advertised in one of the earliest Friendship Letters from Terri Lee she is pictured in her batiste nighty with pompom slippers.



The nightgown comes in many colors with matching bodice trim in a different color. Beautify Val lace trims the neckline and the sleeves.

The most unusual color is the purple on the right.



TERRI LEE 2012 10<sup>th</sup> STREET LINCOLN, NEBR.

☐ TERRI IN CHAMBRAY DRESS . . . . . \$13.95  
☐ CHAMBRAY DRESS, SHOES AND SOCKS . . . . . 2.00  
☐ JERRI IN CHAMBRAY SUIT . . . . . 13.95  
☐ CHAMBRAY SUIT, SHOES AND SOCKS . . . . . 2.00  
☐ TERRI IN NURSES UNIFORM . . . . . 13.95  
☐ NURSES UNIFORM, SHOES AND SOCKS . . . . . 2.00  
☐ JERRI IN DOCTORS UNIFORM . . . . . 13.95  
☐ DOCTORS UNIFORM, SHOES AND SOCKS . . . . . 2.00

LIST HERE WHAT YOU WANT ON LINDA

NAME \_\_\_\_\_  
 STREET ADDRESS \_\_\_\_\_  
 TOWN \_\_\_\_\_  
 AMOUNT OF CHECK OR MONEY ORDER ENCLOSED \$ \_\_\_\_\_

TERRI LEE 2012 10<sup>th</sup> STREET LINCOLN, NEBR.

DEAR LITTLE FRIEND:

THIS LETTER IS TO TELL YOU THE EXCITING NEWS THAT JERRI AND I HAVE A NEW BABY SISTER NAMED LINDA!

JERRI AND I HAD MOTHER MAKE US SOME CLOTHES JUST LIKE LINDA'S DOCTOR AND NURSE WORE. I AM THE NURSE AND JERRI IS THE DOCTOR.

LINDA IS SO CUTE. SHE IS ONLY 11 INCHES LONG. WE ALL THINK SHE IS THE SWEETEST AND PRETTIEST BABY WE EVER SAW.

BECAUSE MOTHER HAS BEEN SO BUSY WITH LINDA, I HAVE ONLY MY NURSES UNIFORM, A LITTLE CHAMBRAY DRESS LIKE THE PICTURE AND A NEW LITTLE BATISTE NITIE WITH TINY FLOWERS. JERRI HAS A MATCHING SUIT LIKE MY CHAMBRAY. IN THE PICTURE ON THE OPPOSITE PAGE YOU CAN SEE HOW CUTE THEY ARE.

IF YOU HAVE A NEW BABY IN YOUR FAMILY YOU WILL UNDERSTAND HOW MOTHER HAS BEEN TOO BUSY TO MAKE ME MANY NEW OUTFITS.

I KNEW LINDA WOULD WANT YOU TO KNOW ALL ABOUT HER AND HER PRETTY THINGS SO I AM WRITING FOR HER.

ILL WRITE AGAIN SOON

LOVE  
 Terri



### SLEEPY TIME

Ohhh hum! It must be time for bed. Mother and Jerri and I like to go to bed early and get up early. It's past our bedtime, and I am so sleepy I can hardly keep my eyes open long enough to put on my pretty pajamas and flannel bathrobe with a tiny lamb or bunny applique trim. The ears on my bunny slippers peak out from under my pajamas. When the weather is warm, I wear my cool batiste nightie, satin bedjacket and bedroom slippers.

### COSTUMES ONLY

5605 Terri's Pajamas	1.75	5610 Jerri's Pajamas	
5707 Terri or Jerri Bunny Slippers	1.95-85	5611 Jerri's Bath Robe	
5607 Terri's Bath Robe		5608 Terri's Silk Bed Jacket	1.25
5606 Terri's Nightie	1.75	5609 Terri's Hand Crocheted	
5706 Terri's Bedroom Slippers	.50	Bed Jacket and Slippers	4.95

29

The 1952 Fashion Parade pairs the nightgown up with silk bed jacket.

The outfit is color coordinated down to the blue pompom slippers. So when were the pajamas made? Lately batiste pajamas have showed up on e-bay. I looked in the Fashion Parades and monthly magazines and could not find any reference to batiste pajamas. It only made since they would have been made around the time of the nightgown, since the fabric is the same.



On the back page of Dec 1953 Monthly Magazine is a picture of Terri in what looks to me to be the batiste fabric pajamas. It's hard to see, so you will have to get out your copy of the magazine.





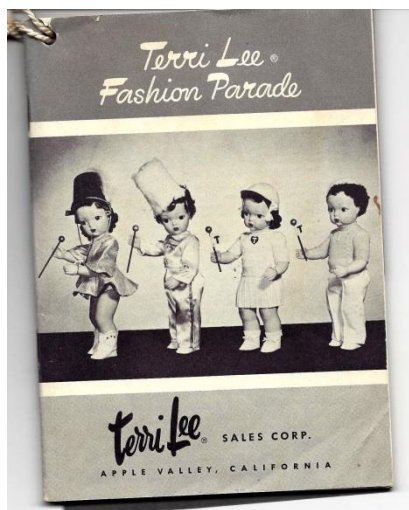
# Connie Lynn in Snow Bunny Suit

By Sandy Dorsey

When an unusual outfit for a Terri Lee doll appears I am caught up in the effort to authenticate it. Here is my study to authenticate Connie Lynn in Snow bunny suit.

In the June 1955 monthly booklet a new playmate for Terri Lee, Jerri Lee, and Linda baby was introduced. She was a very sleepy baby with long curly hair. Her name was Connie Lynn. She was named after Violet Gradwohl's granddaughter. She had sleep eyes and long eyelashes. The doll was large,

cumbersome and expensive. Only one small leaflet was issued with the doll describing the outfits. After the introduction of Connie Lynn the 1954 Fashion Parade included the additional leaflet about Connie Lynn and her special Terri Lee Nursery Registration



TERRI LEE NURSERY  
Registration for  
**CONNIE LYNN - Sleepy Baby**  
and Membership in  
**TERRI LEE FRIENDSHIP CLUB**

My name is \_\_\_\_\_

I live at \_\_\_\_\_ Street \_\_\_\_\_

My home town is \_\_\_\_\_ City \_\_\_\_\_

\_\_\_\_\_ State \_\_\_\_\_

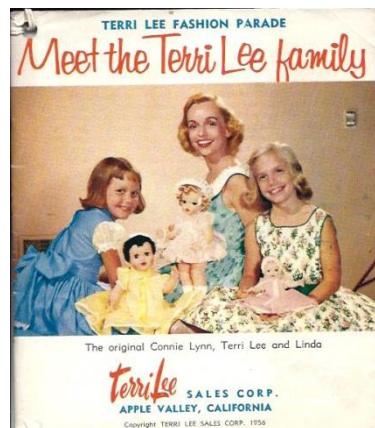
My birthday is \_\_\_\_\_ Age \_\_\_\_\_

I bought my  
Connie Lynn at \_\_\_\_\_ Name of Store \_\_\_\_\_

\_\_\_\_\_ City \_\_\_\_\_ State \_\_\_\_\_

You can join my club by filling in the above  
information and mailing to me—TERRI LEE,  
APPLE VALLEY, CALIFORNIA

Ask for Terri's monthly magazine at your  
TERRI LEE FASHION CENTER



is shown on the cover of the 1956 Fashion Parade along with the Terri Lee and Linda Baby dolls. The Picture on the cover also includes the real Connie Lynn, Terri Lee, and Linda.

Card for membership in  
the Terri Lee Friendship  
Club. The Connie Lynn doll

On page 12 of the 1956 Fashion Parade Connie Lynn and Linda baby are offered in their bunny suits for \$16.95 and \$4.98 respectively. The description reads "And what do you think happened in our Nursery on Easter? Linda Baby and Connie Lynn—Sleepy Baby put on their Bunny suits and pretended they were white rabbits. These outfits are of wool flannel almost as soft as a bunny's fur, with pink pom-poms and pink lined ears." This seems to be only time that Connie Lynn is pictured inside a Fashion Parade. The white bunny suit with pink trim has been a collector's favorite for both Connie Lynn and Linda Baby dolls.

Connie Lynn and Linda Baby appear on the cover of the April 1956 Monthly magazine to celebrate Easter time. A very cute story is included inside this booklet telling about the babies adventure dressed as bunnies. Although the booklet is in black and white the dolls are in their white bunny costumes with pink trim.



Thank you to Glenda Kitto for sharing the 1957 Price List for Connie Lynn items available to dealers. It includes a bunny suit at the same price as in the 1956 Fashion Parade with no mention of a new type of bunny suit. This price list includes a "Cradle Coverlet" which I don't think we have discovered yet.

**BULLETIN BOARD**

**TERRI FASHIONS SHOWN IN THIS ISSUE**

Style Number	Price
Fashion 1384	\$ 8.95
Terri's Velveteen Snow Suit	3394 3.58
Tiny Terri's Velveteen Snow Suit	5345 3.98
Connie Lynn's Bunting	6360 1.95
Linda Baby's Bunting	1385 7.95
Terri's Wool Coat & Hat	1851 9.95
Terri's Wool Coat, Slacks & Hat	1366 5.95
Terri's Ice Skater Costume	5366 3.89
Tiny Terri's Ice Skater Costume	3390 4.88
Tiny Terri's Long Formal Coat	1390 7.50
Terri's Long Formal Coat	1885 3.95
Terri's Fashion Back with Hangers	1889 10.95
Terri's or Jerri's Photo Lamp	1300 .60
Terri's Party Pants	
Terri's Record "Dolly's Lullaby" and The Three Bears	1881 .50
Terri's Chamber School Dress	1330 1.75
Terri's School Dress & Hat	1336 2.90
Terri's Poodle with Autographed Blanket	1955 4.95
Terri's Play Dress	1305 1.89
Terri's Easter & Hat	1254 1.95
Terri's Short Pants and Shirt	2004

**NOTICE**  
Exciting February Issue!

You won't want to miss next month's issue—the February issue. Read all about Terri and her adventures in her beautiful Heart Fund Dress. Valentine's Day comes next month, too. And, of course, Terri and Tiny Terri will wear their Heart Fund Dresses in honor of Valentine's Day.

**Connie Lynn and Linda Baby in their buntings.**

CONNIE LYNN DOLLS				TERRI LEE NURSERY				Connie Lynn Fashions			
ITEM NO.	QUANT. ORDERED	UNIT RET. PR.	TOTAL \$	DESCRIPTION	ITEM NO.	QUANT. ORDERED	UNIT RET. PR.	TOTAL \$			
5100		12.95		Diaper, plastic lined	5300		.60				
5105		13.95		Kimona (no shoes or sox)	5305		1.39				
5110		13.95		Palamas. (no shoes or sox)	5310		1.39				
5112		13.95		Dresses, Ass't'd.	5312		1.39				
5113		14.95		Creeper	5315		1.98				
5120		15.95		Dress & Slip	5320		2.98				
5122		15.95		Dress & Bonnet, Ass't'd.	5322		2.98				
5125		17.95		Christening Dr. Slip & Bon.	5325		4.98				
5130		16.95		Dress, Slip, Bonnet	5330		3.98				
5135		16.95		Bunny Suit	5335		3.98				
5140		18.95		Snow Suit	5340		3.98				
5145		19.95		Bunting	5345		3.98				
5150		19.95		Coat & Bonnet ass't'd.	5350		3.98				
5152		19.95		Leather WINDJAMMER COSTUME	5352		3.98				
5155		23.95		Velveteen Coat & Bonnet	5355		7.98				
				Shoes & Sox Only	5800		.50				
				Cradle Coverlet	5805		3.98				

The January 1957 Monthly booklet shows the babies in their buntings.

## Just between us Babies....



TWO BABIES IN SNOW-SUITS WERE OUT ONE DAY AND WATCHED FROM THEIR CARRIAGE THE RED LEAVES FALL. OH, HOW THEY WISHED THEY COULD GO AND PLAY IN THAT LOVELY LEAF PILE, BUT THEY WERE TOO SMALL!

Connie Lynn and Linda enjoy the outdoors in the pretty Fall Season, too, and Terri and Jerri dress them all snug and warm in their "Bunting" clothes so they won't catch cold. Yes, and these outfits keep the babies very warm and cozy when the snow flies, too!

11

In Marfan Literature of 1962 I don't find any Connie Lynn dolls for sale but I did find that the company was still offering to admit Connie Lynn dolls to the "Hospital" for repair, rewiggging, restringing and eye repair. I also found something else interesting. For the rewiggging of Terri Lee, I believe but possibly Connie too, a POODLE CUT wig is offered. Look at the center of the page. Color: platinum blonde, Honey blonde, Auburn, and Brunette. Style: Poodle cut or Long curls.

An October 1958 Monthly Magazine was offered by the Terri Lee Sales Corporation which included Connie Lynn and Linda baby in their snow-suits and also dressed up for a tea party. No bunny suits are mentioned.

On November 14, 1958, a fire occurred at Terri Lee Factory number 2 in Apple Valley. It was discovered early the next day. And that was the beginning of the end for Terri Lee Sales Corporation of Apple Valley.

Violet Gradwohl continued with the doll business, offering costumes on non-Terri Lee dolls through Macy's Department stores and then reinventing the doll company through I & S and Mar-Fan.

### HOSPITAL CHARGES

#### TERRI OR JERRI

Rewig and refinish like new  
Restring only  
Restring and refinish  
(nothing done to wig)  
To make your Terri a talking  
doll

\$3.50  
1.00  
1.50  
8.00

CONNIE LYNN (eyes not guaranteed)  
Rewig and refinish like new  
Restring only  
Restring and refinish  
(nothing done to wig)  
Repair eyes only

\$4.50  
1.50  
2.00  
2.00

PARTS REPLACEMENT  
Arms \$1.50 ea., Legs \$2.50 ea.  
Body \$3.00

#### TINY TERRI OR TINY JERRI (not guaranteed)

Rewig and refinish like new  
Eye repair (includes new wig)

\$1.50  
1.50

PARTS REPLACEMENT  
Arms \$.25 ea., Legs \$.50 ea.,  
Body \$1.00

LINDA BABY (not guaranteed)  
Refinish like new  
PARTS REPLACEMENT  
Arms \$.25 ea. Head \$.75  
Legs \$.50 ea. Body \$.75

Please check style and color of wig desired:

COLOR		STYLE
Platinum Blonde	Auburn	Poodle cut
Honey Blonde	Brunette	Long curls



MAIL YOUR DOLLS FOR REPAIR TO: TERRI LEE  
1708 Standard St.  
Glendale 1, Calif.

### ADMISSION CARD

NAME \_\_\_\_\_ ADDRESS \_\_\_\_\_

So, nowhere have I found any mention or pictures of Connie Lynn in Snow bunny suit. Actually a snow bunny suit for Linda Baby may exist too! What's a girl to do? Leave it to YoursTerriLee also known as Sandy Dorsey. She doesn't give up so easily. Dennis Ross has two Connie Lynns in Snow Bunny suits. One has pink trim and one in blue trim.

Last year at the Daisy Chain Convention in Los Angeles we had a wonderful and exciting discovery when we met Linda Miller whose parents owned Mary and David's Toy and Doll store in Long Beach and who's mother owned and operated Richard's Terri Lee Doll House on Lido Isle, in Newport Beach. Linda had a treasure trove of pictures of the Terri Lee Doll houses and so I decided to check the pictures. I was doubly rewarded with pictures of Connie Lynn in Snow Bunny suit both in Mary Hargrove's doll house in Newport Beach and also in the Broadway Department Store Terri Lee Doll house which was in Anaheim near Disneyland.



Terri Lee in Mink Coat 1957  
Richard's Terri Lee Doll House  
Lido Isle, Newport Beach, CA

Connie Lynn in her Snow Bunny suit is pictured on the upper right hand shelf of Richards's Terri Lee Doll House in a 1957 photo. A closer look below.



This is the Broadway Department Store's Terri Lee Doll House showing Connie Lynn in Snow Bunny outfit in the window. The picture is dated March 1958. Finding this unusual costume in both of the Terri Lee Doll houses indicates that the outfit is authentic and was available for the public to purchase. We don't know what colors were available or what the price was.

Please email me if you have this Connie Lynn outfit. [Sandilee43@roadrunner.com](mailto:Sandilee43@roadrunner.com).

# Comparing Connie Lynn's Bunny Outfits

By Sandy Dorsey

Both of Connie Lynn's bunny outfits are made from the same pattern. Although the snow bunny may be a bit more generous, the seams appear in the same places. Wrists have elastic in them and the front closure is the same size and closes with 2 square snaps. Both costumes cover the feet.



The white bunny outfit has two pink pompoms on the front and a pink pompom for a tail on its backside. It ties with a pink satin ribbon and has pink satin ribbon trim around the hood. The ears are of pink taffeta on the front and back side of each ear.



The snow bunny outfit ties with either pink or blue satin ribbon and has wider satin trim around the hood. The ears are satin on the front and fuzzy fabric on the back.



Both costumes have a green embroidered Connie Lynn tag sewn in at the back of the neck.



# Why Don't I Fit In?

by Dennis Ross

Terri Lee blinked as the harsh rays of sunlight blazed into her pretty brown eyes. "My goodness where am I?" she murmured to herself as the lid of the old cardboard box was pushed aside. At once a huge, gigantic and monstrous face was thrust before her.

"Who are you?", demanded the glaring face. Terri shook her lustrous platinum curls, still in original set, and stammered courageously "I am Terri Lee the queen of dolls". "Ha! ha! Ha!" shrieked the humongous face. "You, such a little pipsqueak, a queen? You must be kidding!" "Well, who are you" Terri asked a bit timidly. "I am Evimike one of the largest dolls that the German doll artist Annette Himstedt ever created. I'm 48 inches tall.

I have light brown human hair, a special neck joint, shoulder, elbow and knee joints. I was created in 2004." Terri felt she was in no position to argue and that her best ploy might just be flattery. "You have beautiful big eyes" said Terri.

"The better to see you with my dear" said the gigantic face, "and beautiful big ears" continued Terri. "Yes, the better to hear you with my dear" said the big face. "And a gorgeous big teathy mouth" Terri bravely said. "Yes, the better to... welcome you to the Arcadia, California doll nursery!" said the huge face. Terri breathed a sigh of relief and began climbing out of the box which she'd been carried home in.

"Thank you" Terri said politely. "Your outfit is certainly beautiful" she added. "Oh thanks, all of us Himstedts come special dressed in costumes Annette Himstedt designed for each one of us" said Evimike.

As Terri got herself out of the box, she bumped into some antique brown furniture. It was much too small for her to use. There was a cute little chair, and another chair whose lid seat actually could lift up and down.

Next to it was a cradle that rocked and beside that was a closet with a door. "What are these for?" asked Terri. Evimike answered "They just came in along with you in that box." Just then, Terri spied a typewritten tag beside the rocking cradle. It stated: *Antique rare French Quimper Breton hand carved wooden miniature doll house furniture, 1900-1930. Carved by sailors, Motif of ship's wheel appears on many pieces. Celtic inspired with the spindle Rosace designs. For 12"-14" dolls.*

"Oh, just about perfect for my little brother and sister," Terri said. "They are 10 inches tall." she explained to the immense doll looming over her. "Yes, I know. I've seen them here in the nursery" Evimike told Terri.

Given this news, Terri's spirits brightened considerably. "Let me give you a tour" offered Evimike. "This is the Himstedt doll gallery. Right there is my sister, Annalisa. She's 48 inches tall as well." "You are really big girls" Terri quietly acknowledged. "And you seem shorter than the others," Evimike replied. "Others? Terri brightened up? Others such as I?" she asked. "Oh, yes, hundreds of them" reassured Evimike. Terri felt a shiver of excitement run through her. She also felt a shiver since she was naked without a stitch on! "I wish I had some clothes to wear. It's a little chilly" chattered Terri. Evimike, dressed in her warm jacket, didn't seem to care. "This is Nakuma. He is 31 inches tall,

has black human hair, and depicts a Sioux Indian boy partaking in a traditional tribal dance. He was created in 2008.”

Terri thought he was quite handsome. “Oh, my look at her!” whispered Terri. “Yes, this is Princess Moonstar created in 2001.” “You’re beautiful” said Terri. “Next to her is Prince Sunray. I’m surprised you don’t know of them if, as you say, you are the Queen of dolls,” Erimike said rather sarcastically. “I am...or was...that was in the 1950s.” “Oh, that long ago? That’s ancient history” sniffed Evimike.

“Here’s Michel, from 2002. He is 32 inches tall and has blonde mohair.” “Hello” said Terri. “I have my boat and blanket” Michel explained to Terri.

“Now these next dolls are some of my best friends from 2004,” remarked Evimike. “This is Paul, this is Hugo, and Freddie.” “Hello” the boys called out to Terri. “I like your cheery smile” said Terri to Freddie, which made him smile even bigger.

As they moved along the Himstedt gallery Terri was amazed at all of the large dolls who lived there. She felt smaller than ever. “From 2005 we have Katiina from Finland, Jogona a warrior Mensal boy from Kenya, and Dernea, a 38 inch tall Apache boy.”

The dolls exchanged polite greetings. Evimike could tell Terri was anxious to move on.

“From 2006, we next have the under the sea dolls,” pointed out Evimike. “This is Namor, 37 inches tall with brown human hair. He has jointed knees and elbows and could be ordered with special Atlantis under water face paint in gold. In 2007 all the girl dolls had hats... even the one boy doll, Eddie.” “And a lot of hair” laughed Eddie as he smiled at Terri.

Soon they came to the R. John Wright area of the doll nursery. A very friendly March Hare hopped over to greet Terri with a warm bunny handshake. “I’ll take over from here” offered the March Hare. Evimike bid Terri goodbye and said she hoped that Terri would be very happy once she settled into the nursery.”

“R. John Wright started making felt dolls in 1977,” explained the March Hare. He made character dolls molded of felt, fully jointed and were 18 inches tall. He made St. Nicholas, Seth, Emma and Guido as unnumbered editions. They were, and still are all made in the USA.

Between 1981-85 Jesse, Lillian and Peter were created in editions of 250 each. They were part of the Little Children series as were Tad, the fisherman and Becky. They are each 17 inches tall.” Terri, who was sometimes referred to as an 18 inch doll, felt short beside them. She knew something must be wrong as she caught their reflections in the glass doors and saw how much shorter she actually was - shorter than 17 inches!

Not realizing anything was troubling Terri, the March Hare moved on. “This is William in the blue romper.” “Oh, my brother, Jerri, has a blue romper or playsuit as he prefers to call it,” said Terri as she greeted William with a warm dolly smile. Next Terri said hello to Max and his wooden Pinocchio doll. “I was only made in 1985. There are 149 others somewhere” he announced. Terri greeted him and then heard a tap-tap-tap from a drum. Coming right up to her was Edward and His Drum. “I too, was created in 1985 in an edition of 150.” he told Terri.

Two 17 inch dolls, Michael and Lindsay, were almost fast asleep. She with her doll and he with his velveteen rabbit. Terri whispered she was pleased to meet them both and would be back soon when they were more awake.

Next she was introduced to Lisa and Scott. "I love your hand knit sweaters!" exclaimed Terri. "I, too have many hand-knit sweaters in my wardrobe...if I ever find it" she said wistfully.

Standing before her now were two dolls of 18 and 20 inch stature. Made in 1987-89 in editions of 500 each. "I'm Arthur" said the boy doll holding a sail boat." "And I'm Lillian" greeted the girl doll grasping a jump rope.

"I'm Terri Lee and I'm delighted to make your acquaintance," said the naked shorter doll. "I need to find me some clothes. I do like both of your sailor outfits" remarked Terri. "My brother and I have several sailor outfits...I do wish I had one right now to put on!"

The March Hare hurried Terri along this part of the doll nursery now as he could tell Terri was self conscious about walking around with no clothes on. Even he, a rabbit, had a handsome suit of clothing. "The poor dear" he thought to himself.

Patrick and his bear greeted Terri next. "My brother and I have jeans and plaid shirts in our wardrobes" said Terri as a tear appeared in her eye. "And I have farmerette outfits which have bib overalls much like yours" she commented.

Hans Brinker and Gretel Brinker said hello to Terri as she and the March Hare passed by. Hans held up his pair of silver skates for Terri to see. "Oh, yes, I, too, have silver skates whispered Terri as well as other colors and special ice skating outfits to accompany those skates!" Terri impatiently said, for at this moment she was feeling sad that she knew her special wardrobe had all those things these dolls she'd just met had and much, much more. But what did she really have? Nothing, absolutely nothing. "I don't seem to fit in" she thought to herself. And thinking back to her recent reflection in the glass made her even more convinced she might not even be a Terri Lee doll for she was too short. Maybe she was a cheap knock off...a reproduction...these scary thoughts coursed through her mind.

At that moment another very tall 20 inch doll came up to her to say hello. "I'm Little Red Riding Hood" she introduced herself to Terri. "I was created in 1988 in an edition of 500." Terri looked at her intently and then said, "I like your basket which I suppose you're taking to your ... grandmother?"

"Why yes, you're right, how did you know?" asked Little Red Riding Hood.

"Just a lucky guess," grinned Terri. "Aside from fruit, cheese and bread there is even a box of R. John Wright special tea!" exclaimed the proud doll.

A few steps away Terri was taken aback by a lovely grouping of three dolls. Heidi, holding her baby goat, Peter with his larger handsome goat and Heidi's grandfather who was even taller than any of the previous R. John Wright dolls Terri had greeted.

"I want you to meet some of the children dolls from the R. John Wright Nursery Rhyme series next" the March Hare said to Terri.

"This is Mary, Mary, Quite Contrary and Little Boy Blue. They are both 17 inches tall." Terri felt too short once again. Now she was worried all over again!

Little Miss Muffet smiled her hello to Terri as she passed by. Jack and Jill said hello before they made their perilous trip up the hill.

Tom, Tom the Piper's Son was holding a mohair piglet. Terri took in Tom's handsome costume. The hat, the felt jacket, the plaid skirt, or Kilt and began remembering all of the pieces in her wardrobe which were so very, very similar!

They had come to another doll of royalty. "I'm the Little Prince, the main character from the children's book," bowed the doll as he took Terri's hand and gently bestowed a kiss upon it.

"This is Terri Lee, She is the, Queen of Dolls," introduced the March Hare.

"We're over here!!" a huge group of dolls called out. As Terri looked at the next nursery room she saw a most delightful sight before her! Terri Lee dolls - hundreds of them. And Jerri Lee dolls - hundreds of them! And Tiny Terris and Jerris and Linda Babies and Connie Lynns and So Sleepies!!! She was home - really home. But wait - was she really a Terri Lee doll? That recurring, terrifying thought returned to her little dolly head. Hadn't her reflection showed that she was not actually a full sized Terri Lee doll? Was she an imposter?

She came closer and was greeted by Jerri and Terri and Bonnie Lou and Benji. It was true she realized she did not fit in - literally!!! She was too short.

"Here put this tagged white formal on" her big sister Terri offered. She did and suddenly had tears stinging her pretty doll eyes because as she and the other dolls looked on they saw that she swam in the white formal dress - for it was way too big for her. It made her look like an orphan.

She saw a deluxe wooden wardrobe. She opened it. It was full of tagged Terri Lee clothing...but all too large for her little shrunken body to wear.

Suddenly two dolls stood beside her. They were exactly the same height as she. "It's all right" they reassured her. "You truly are genuine. You are special. You're made of soft vinyl...as are we." She looked at her two angelic saviors. They were a Terri and a Jerri and they were just like her - exactly like her!

"Our creator, Vi Gradwhol, was constantly experimenting and trying out new things. We are the result of one of her creative experiments in the 1950s. We are actually considered rare for there are not many of us around," they explained.

Our Terri sighed a sigh of relief knowing that she truly was a genuine Terri Lee doll, for throughout this short time in the doll nursery she was most certainly having dire doubts!

"But...but what about the beautiful tagged clothing? Why didn't the white formal dress fit as it should have?" she asked her two saviors. "Well, that is a problem...a cross which we, as soft vinyl Terri Lee dolls all have to bear" they confessed. "You see we are shorter in stature due to the material used to create us. Dresses do seem too big as do most all of the Terri Lee tagged clothing. However...the swimwear looks fabulous on us! The many, many Jerri swim trunks and huge array of Terri swimsuits all fit us pretty well so we can have a fun life of beach parties!" Our Terri had just finished trying on a pretty navy pique sunsuit and matching jacket and was positive proof that she could wear any of the Terri Lee swimwear line.

The three dolls hugged each other for they knew many happy times were in store for them ahead.

"Happy Days Are Here Again" our Terri began humming, to herself for now, she was certain she truly did fit in!



Soft vinyl Terri



Terri meets Evimike



Terri makes new doll friends





Terri finds her deluxe wardrobe



Terri meets R. John Wright dolls

Two other soft vinyl dolls



Terri finds a tagged outfit that fits

# Little Mother Sews a Bonnet for Linda Baby

By Mary M. Hayden

Linda Baby clothing is so adorable and so very small, no wonder she loses her tiny accessories. Her velveteen bonnet is quite simple to replace with a new one, but you need to know her head size.

Not all Linda Babies have the same size heads. To help you find the correct size bonnet for your Linda Baby, you will need to measure her head. My Linda Baby measures 4 inches from the center of one ear to the center of the other across the crown.

If your Linda Baby had a larger head, you will need to enlarge the pattern to make it fit. Use the lines indicated on the pattern for adjustments. Cut the pattern on line indicated and add the needed inches.

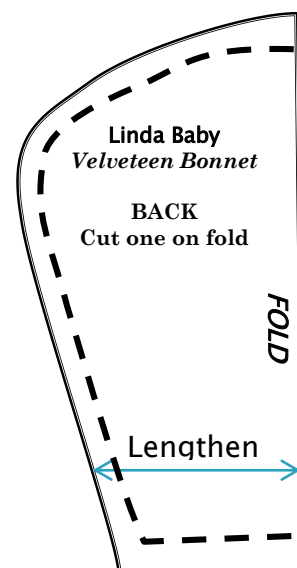
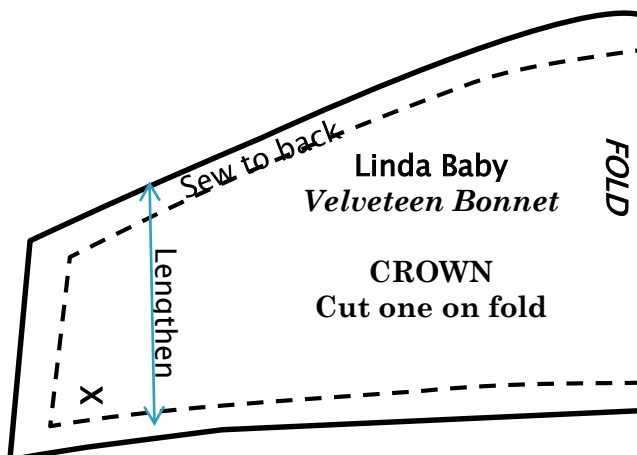


## Materials:

¼ yard fabric for bonnet  
¼ yard of fabric for lining  
1 yard ¼" white satin ribbon  
Small tufts of fur  
Thread

## Instructions: Sew all seams ¼"

1. Sew crown to back, do the same for the lining.
2. With wrong sides together sew the lining to the bonnet, leaving open the bottom of the bonnet.
3. Turn in the bonnet bottom and sew in place.
4. Add ribbons and fur tufts to bonnet sides, at "X"s. Trim ribbon to desired length.



# Jerri's Fun Page!

By Dennis Ross



What do you get when you  
cross an elephant with a fish?  
*Swimming trunks!*

When does B come after U?  
*When you take some of its  
honey!*

What do you call a car when  
the sunroof is left open  
overnight and it rains?  
*A car pool!*

What is the rudest shade of  
purple?  
*Burple!*

Where does a sick ship go?  
*To the dock!*

What does a religious man  
use to cook his food?  
*A friar (fryer)*

Did you hear about the fire at  
the circus  
It was in tents!

What is a dog's favorite  
snack?  
*Pupcorn!*